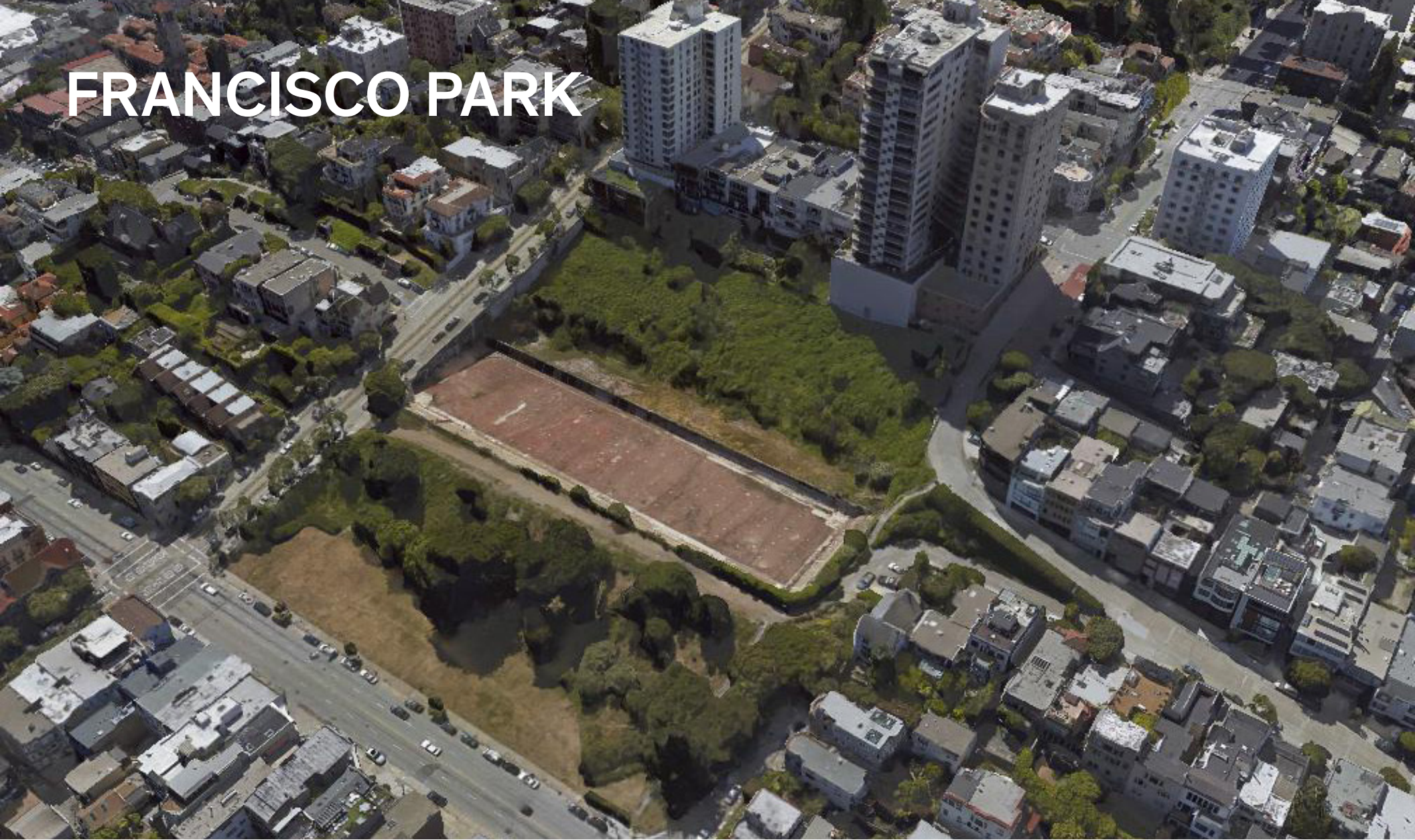


FRANCISCO PARK



CONCEPT DESIGN PACKAGE

May 2017



Welcome
Bienvenido
Talofa
歡迎



AGENDA

1. Project Team
2. Site Context
3. Goals & Process
4. Concept Design
5. Public Comments

PROJECT TEAM

Francisco Park Conservancy

FPC Board of Directors & Committees

SF Recreation & Parks Department

Phil Ginsburg

Dana Ketcham

Stacy Bradley

Anne Baskerville

Lisa Bransten

Cara Ruppert

450 Architects - Architect

Richard Parker

Lutsko Associates *landscape* - Landscape Architects

Ron Lutkso

GLS Landscape/Architecture - Landscape Architects

Gary Strang

Sherwood Design Engineers - Civil Engineering

Bry Sarte

Cody Anderson

Architectural Resources Group - Historical Consultants

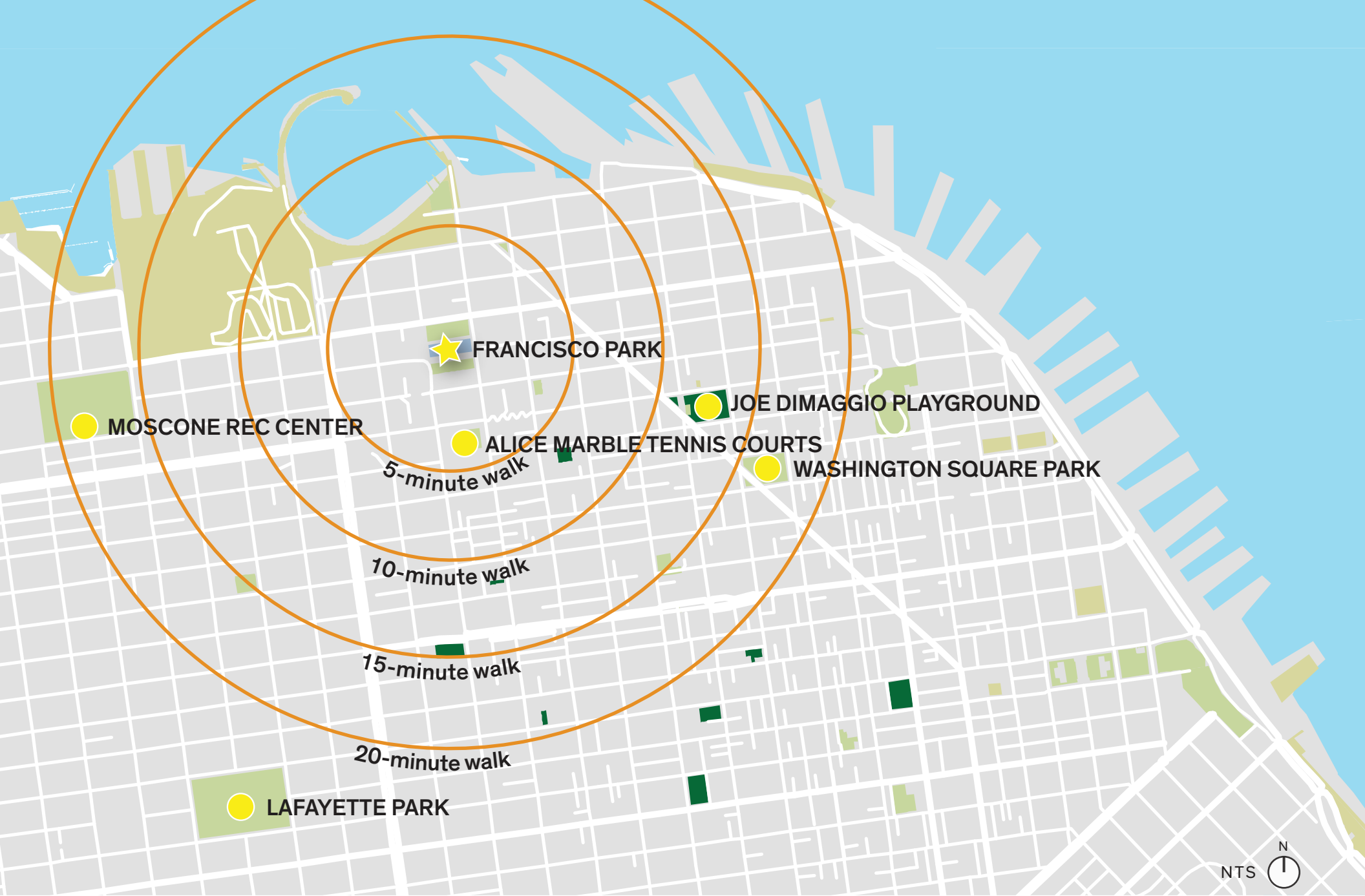
Steve Farneth

Cahill Contractors - Pre-Construction Services

Chuck Palley

SITE CONTEXT





NEIGHBORHOOD PARKS AND PLAYGROUNDS



4.5 ACRES



2.26 ACRES



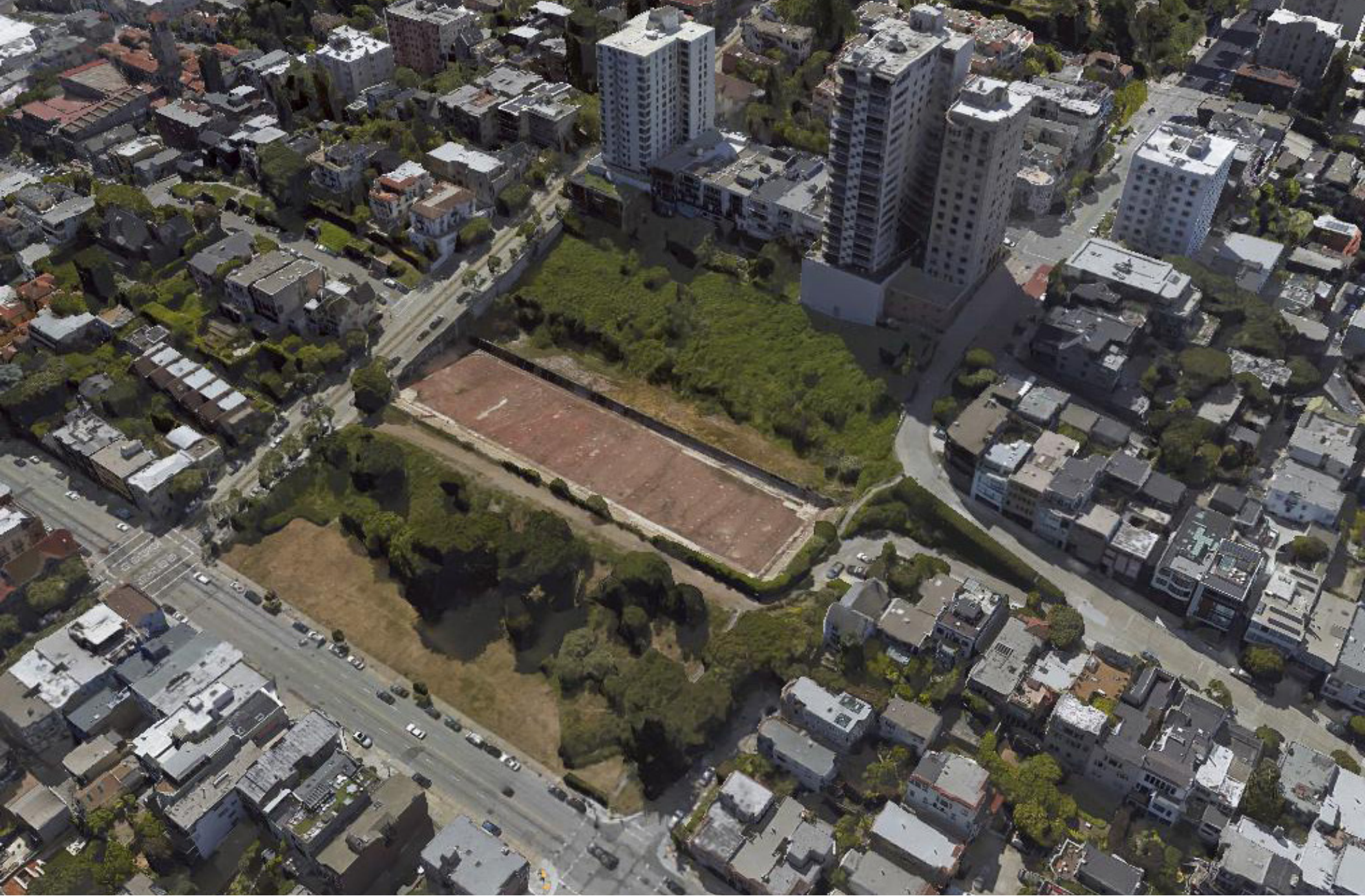
11.49 ACRES

PARK CONTEXT



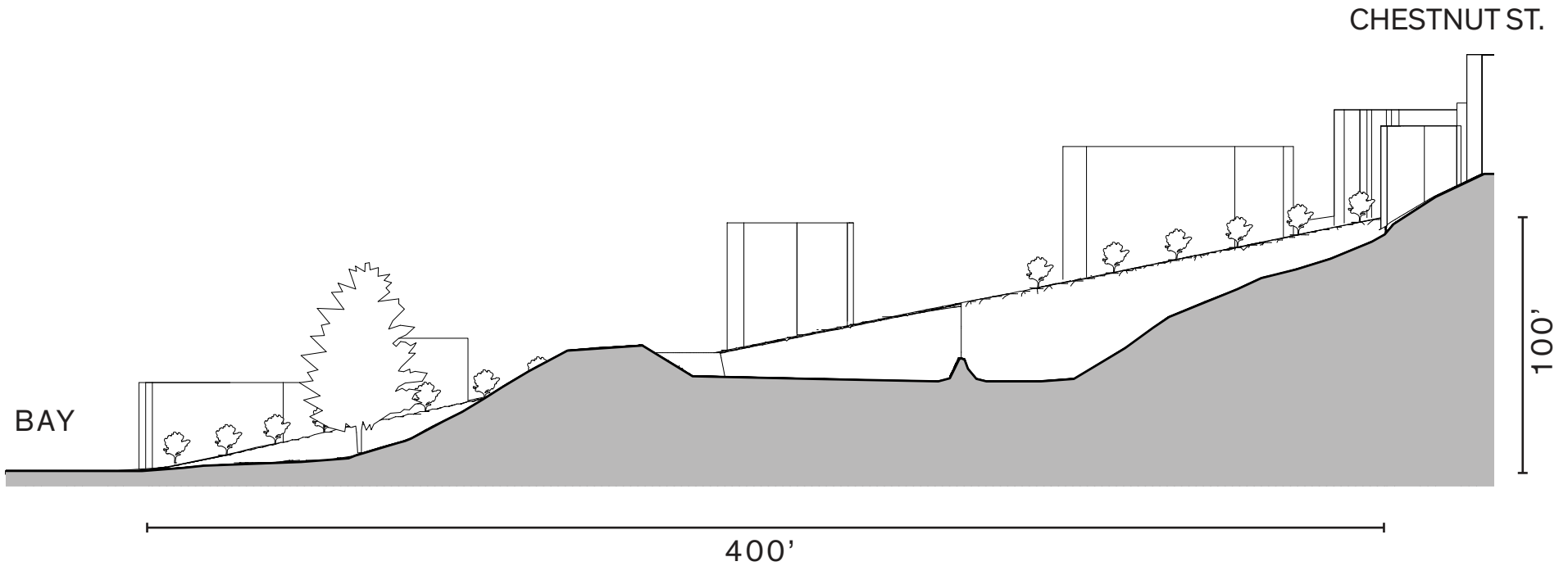
SITE HISTORY

CONCEPT DESIGN PACKAGE



EXISTING SITE

CONCEPT DESIGN PACKAGE



EXISTING SITE SECTION

GOALS & PROCESS

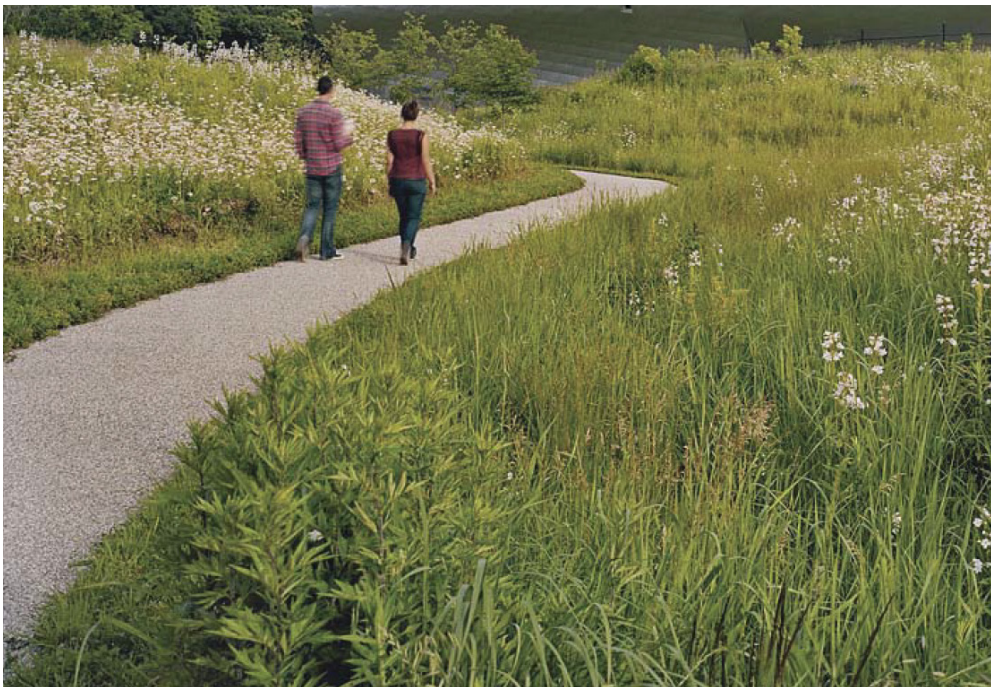


PROJECT CHALLENGES & OPPORTUNITIES

- Topography
- Diverse user groups
- New park in existing neighborhood
- Historic preservation
- ADA accessibility
- Water conservation
- Habitat
- Safety
- Maintenance

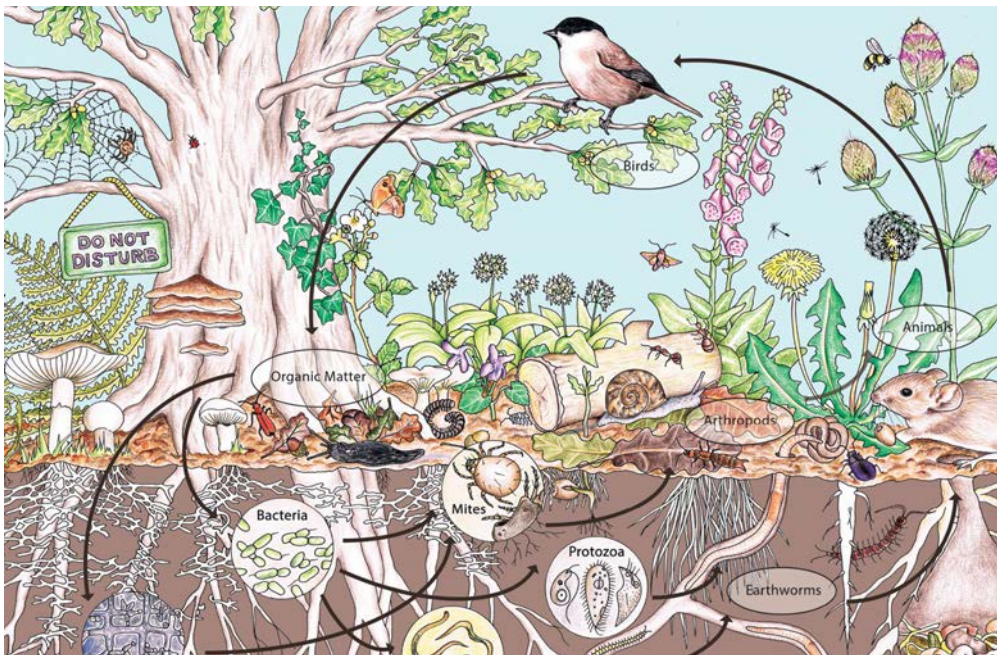
PROJECT GOALS

- A public park accessible to the entire city
- Connect open space and communities
- Include active and passive uses
- Celebrate Bay Area views
- Safe, well-maintained space day and night
- Feature historical water education story
- Create habitat for wildlife
- Maximize sustainability and water conservation
- Easy to maintain



DESIGN INSPIRATION - USES

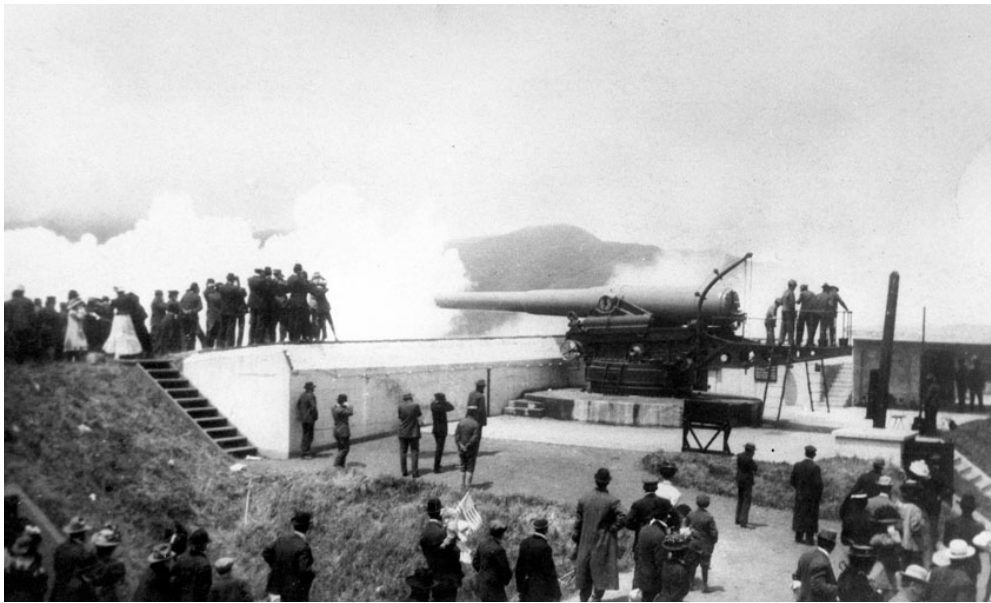
CONCEPT DESIGN PACKAGE



DESIGN INSPIRATION - ECOLOGY



Chrissy Field



Battery Godfrey/Golden Gate Trail



DESIGN INSPIRATION - PRESERVATION



- Community outreach ongoing since 2012
- Public meetings held in September, November, and January in partnership with SF Recreation & Parks Department
- Smaller focus group meetings and outreach to community organizations ongoing
- Online design survey posted in October, collected 900+ responses

OUTREACH PROCESS

COMMUNITY SUPPORT

Alive & Free/Omega Boys Club

Aquatic Park Neighbors

Chinatown Child Development Center

Coalition for San Francisco Neighborhoods

Galileo Academy

Golden Gate Audubon Society

Golden Gate National Parks Conservancy

Nature in the City

North Beach Neighbors

Middle Polk Neighborhood Association

Parks and Recreation Open Space
Committee (PROSAC)

Russian Hill Community Association

Russian Hill Improvement Association

Russian Hill Neighbors

San Francisco Beautiful

San Francisco League of Conservation Voters

San Francisco Parks Alliance

San Francisco Tomorrow

Self-Help for the Elderly

Sierra Club, Bay Chapter

South End Rowing Club

Telegraph Hill Dwellers

TEL-HI Neighborhood Center

Wu Yee Children's Services

YMCA of San Francisco (Chinatown)

“This is a special space, requiring visionary plans and careful stewardship. It should be a model for an urban park in San Francisco, and feature as many sustainable aspects as possible.”

“No light pollution, I hope that park lighting won’t block the night time views”

“I’d love to see a fully enclosed and partitioned dog park”

“Community Garden!”

“Habitat, yes to birds, bees and pollinators!”

“Water could be the unifying theme of the park: educationally throughout, a water feature for children, a part of the public art”

“Reserve highest space for best views.”

“It would be great to add a good quality turf soccer field with lights . . . Better athletes, better people!”

“...wild and natural children’s playground, flowers to pick.”

“Love green roofs and modern restrooms”

“Sculptures reflecting the City’s multicultural heritage”

“Soccer field focused on youth use is greatly needed! Kids & family life need more support in North Beach!”

COMMUNITY FEEDBACK

1. Larger, flatter **open space** for recreation, including soccer, picnics, etc.



1. **Increased main lawn flat area by 60%** allowing for diverse uses, including U10 soccer practice

COMMUNITY FEEDBACK → DESIGN CHANGES

1. Larger, flatter **open space** for recreation, including soccer, picnics, etc.

2. Preserve and highlight the **cultural resource** of the historic reservoir site

→ 1. Increased main lawn flat area by **60%** allowing for diverse uses, including U10 soccer practice

→ 2. Adjusted slope at Bay Street side of main lawn to **preserve** more of the historic reservoir's berm

COMMUNITY FEEDBACK → DESIGN CHANGES

1. Larger, flatter **open space** for recreation, including soccer, picnics, etc.



1. Increased main lawn flat area by **60%** allowing for diverse uses, including U10 soccer practice

2. Preserve and highlight the **cultural resource** of the historic reservoir site



2. Adjusted slope at Bay Street side of main lawn to **preserve** more of the historic reservoir's berm

3. Make ADA paths a more **gradual** grade



3. Nearly all paths reduced to 5% grade, allowing for **greater accessibility**

COMMUNITY FEEDBACK → DESIGN CHANGES

1. Larger, flatter **open space** for recreation, including soccer, picnics, etc.



1. Increased main lawn flat area by **60%** allowing for diverse uses, including U10 soccer practice

2. Preserve and highlight the **cultural resource** of the historic reservoir site



2. Adjusted slope at Bay Street side of main lawn to **preserve** more of the historic reservoir's berm

3. Make ADA paths a more **gradual** grade



3. Nearly all paths reduced to 5% grade, allowing for **greater accessibility**

4. Conserve **native** plants and trees



4. Adjusted placement of walking paths to **preserve** additional decades-old trees

COMMUNITY FEEDBACK → DESIGN CHANGES

1. Larger, flatter **open space** for recreation, including soccer, picnics, etc.



1. Increased main lawn flat area by **60%** allowing for diverse uses, including U10 soccer practice

2. Preserve and highlight the **cultural resource** of the historic reservoir site



2. Adjusted slope at Bay Street side of main lawn to **preserve** more of the historic reservoir's berm

3. Make ADA paths a more **gradual** grade



3. Nearly all paths reduced to 5% grade, allowing for **greater accessibility**

4. Conserve **native** plants and trees



4. Adjusted placement of walking paths to **preserve** additional decades-old trees

5. Seamlessly **incorporate** historical interpretive element into overall park design



5. Historic interpretive element now on **primary circulation** path with playground adjacent

COMMUNITY FEEDBACK → DESIGN CHANGES

1. Larger, flatter **open space** for recreation, including soccer, picnics, etc.



1. **Increased main lawn flat area by 60%** allowing for diverse uses, including U10 soccer practice

2. Preserve and highlight the **cultural resource** of the historic reservoir site



2. Adjusted slope at Bay Street side of main lawn to **preserve** more of the historic reservoir's berm

3. Make ADA paths a more **gradual** grade



3. Nearly all paths reduced to 5% grade, allowing for **greater accessibility**

4. Conserve **native** plants and trees



4. Adjusted placement of walking paths to **preserve** additional decades-old trees

5. Seamlessly **incorporate** historical interpretive element into overall park design



5. Historic interpretive element now on **primary circulation** path with playground adjacent

6. Discreet, safe restrooms situated **close to children's playground**



6. Moved children's playground to be within **sight line** of restroom facilities

COMMUNITY FEEDBACK → **DESIGN CHANGES**

1. Larger, flatter **open space** for recreation, including soccer, picnics, etc.



1. **Increased main lawn flat area by 60%** allowing for diverse uses, including U10 soccer practice

2. Preserve and highlight the **cultural resource** of the historic reservoir site



2. Adjusted slope at Bay Street side of main lawn to **preserve** more of the historic reservoir's berm

3. Make ADA paths a more **gradual** grade



3. Nearly all paths reduced to 5% grade, allowing for **greater accessibility**

4. Conserve **native** plants and trees



4. Adjusted placement of walking paths to **preserve** additional decades-old trees

5. Seamlessly **incorporate** historical interpretive element into overall park design



5. Historic interpretive element now on **primary circulation** path with playground adjacent

6. Discreet, safe restrooms situated **close to children's playground**



6. Moved children's playground to be within **sight line** of restroom facilities

COMMUNITY FEEDBACK → **DESIGN CHANGES**

PROPOSED PARK RULES

As a “neighborhood park,” certain park activities will be allowed with a permit issued by RPD and other activities will not be permitted.

ACTIVITIES ALLOWED BY PERMIT

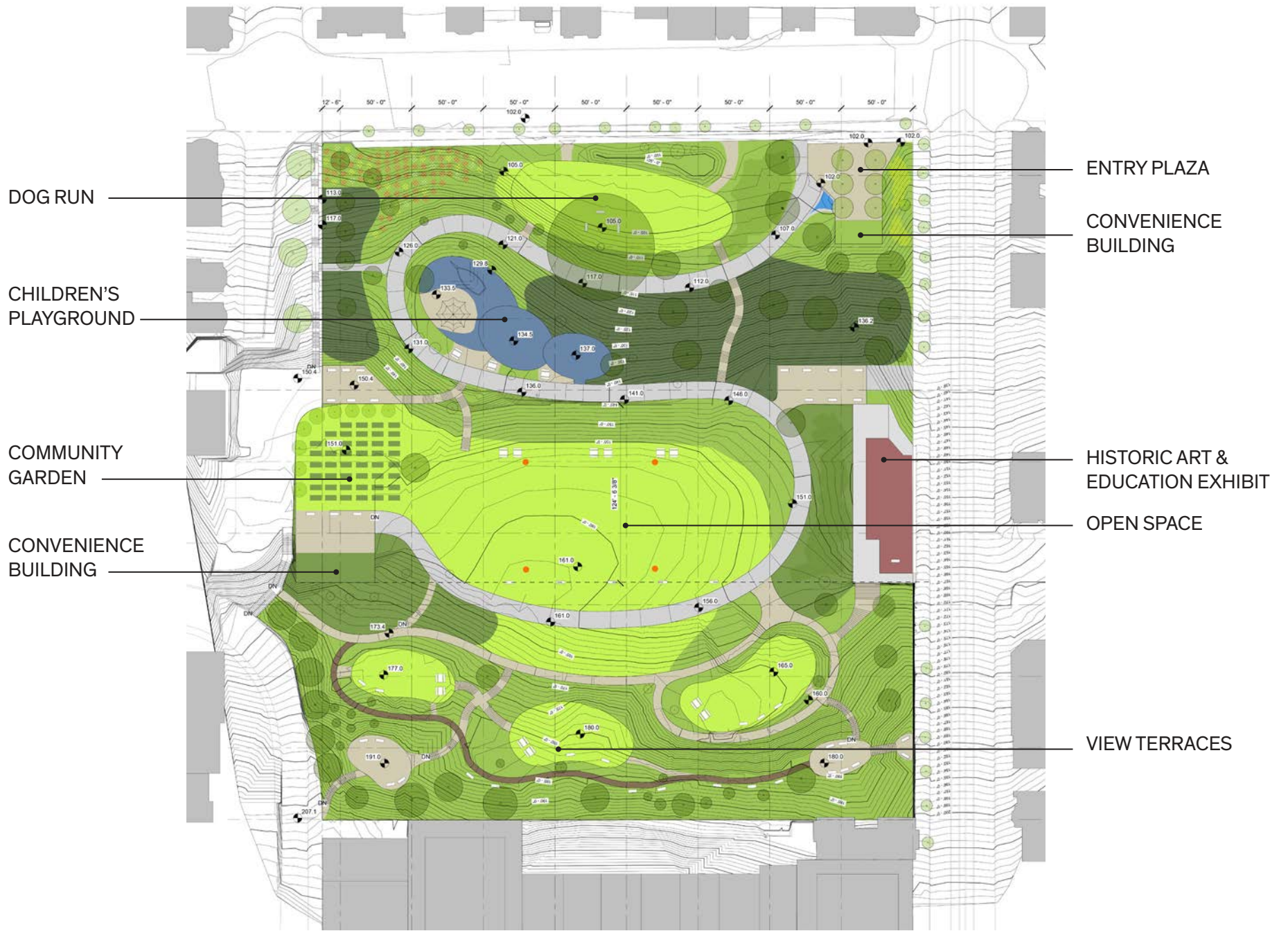
- Large picnics over 25 people
- U10 soccer practices
- Weddings
- Film and photography

PROPOSED PROHIBITED ACTIVITIES

- Alcohol
- Smoking
- Fires/cooking
- Camping
- Littering
- Amplified sound
- Dangerous or disorderly conduct
- Aircraft, large balloons or drones
- Temporary structures
- Wheeled conveyances, except wheelchairs, strollers and small toys
- Concessions/commercial use
- Off-leash animals, except inside enclosed dog run

CONCEPT DESIGN





CONCEPT DESIGN - BEFORE

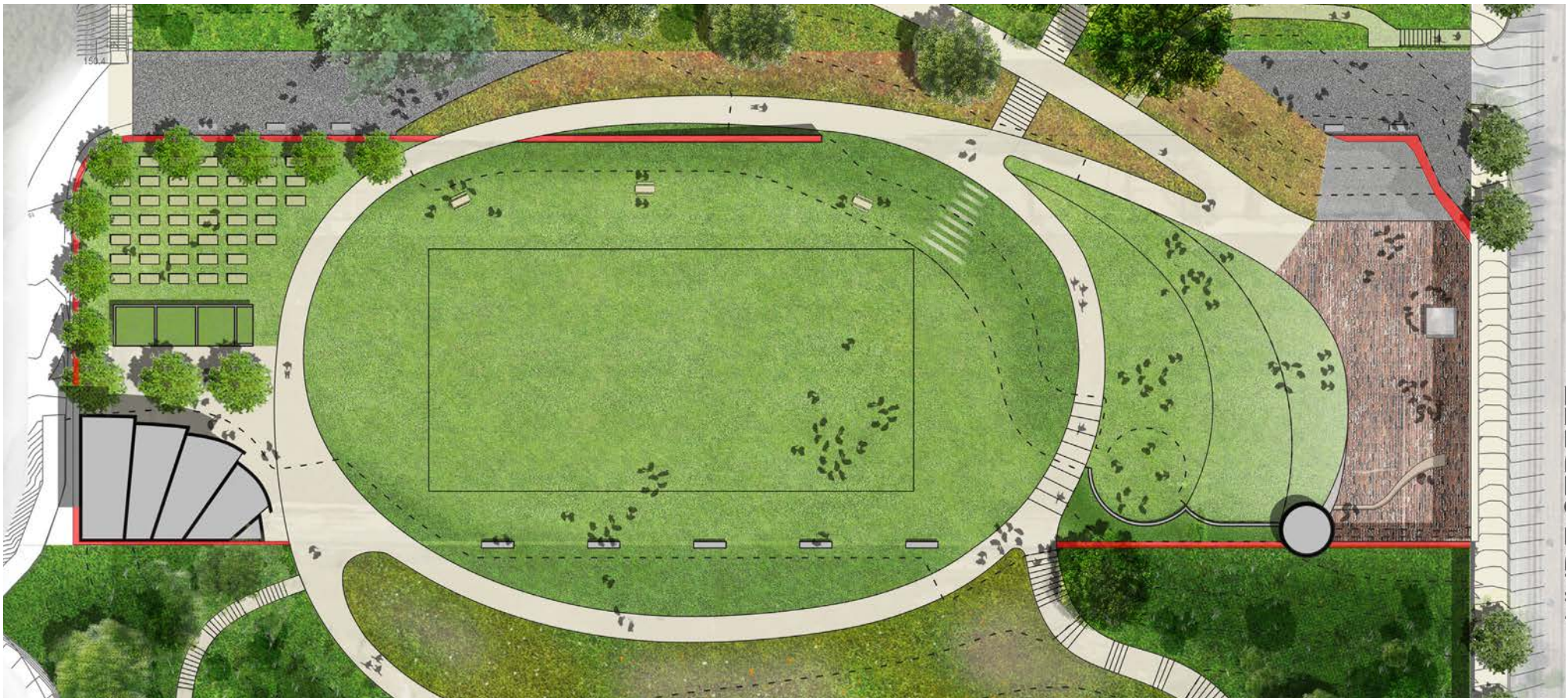


CONCEPT DESIGN



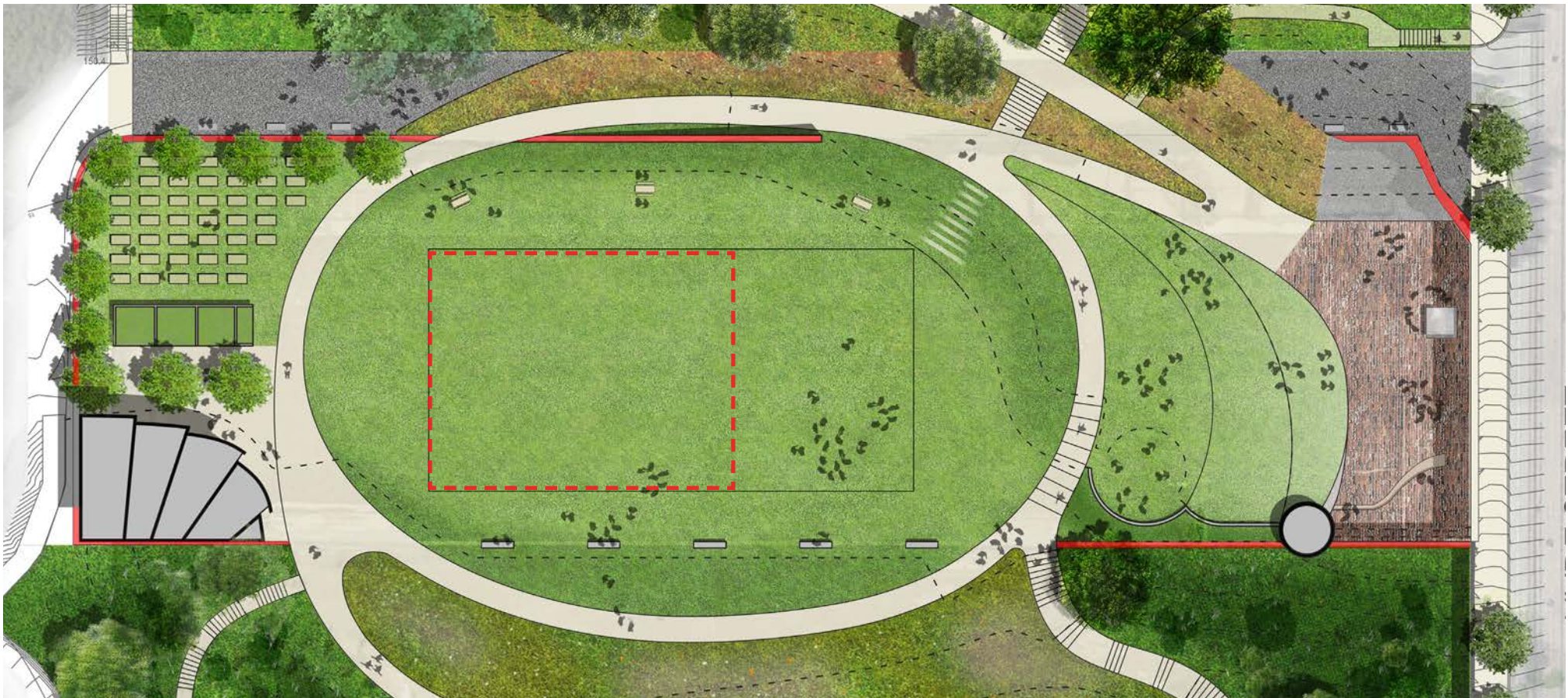
CONCEPT DESIGN - BAY STREET

- Nearly all paths reduced to 5% grade, allowing for greater accessibility
- Moved children's playground adjacent to historic interpretive program and separated children from dog run.



CONCEPT DESIGN - MAIN LAWN

- Increased main lawn flat area by 60% allowing for diverse uses, including U10 soccer practice
- Moved children's playground adjacent to historic interpretive program and separated children from dog run.
- Historic interpretive element now on primary circulation path and playground has been moved adjacent



MAIN LAWN - BEFORE AND AFTER

- Increased main lawn flat area by 60% allowing for diverse uses, including U10 soccer practice
- Moved children's playground adjacent to historic interpretive program and separated children from dog run.
- Historic interpretive element now on primary circulation path and playground has been moved adjacent



CONCEPT DESIGN - VIEW TERRACES

- Increased habitat area at higher elevations of park allowing for greater diversity of wildlife, plants, etc.
- Consolidated view terraces creating larger buffer zone



CONCEPT DESIGN

Walls



Plaza



Stairs



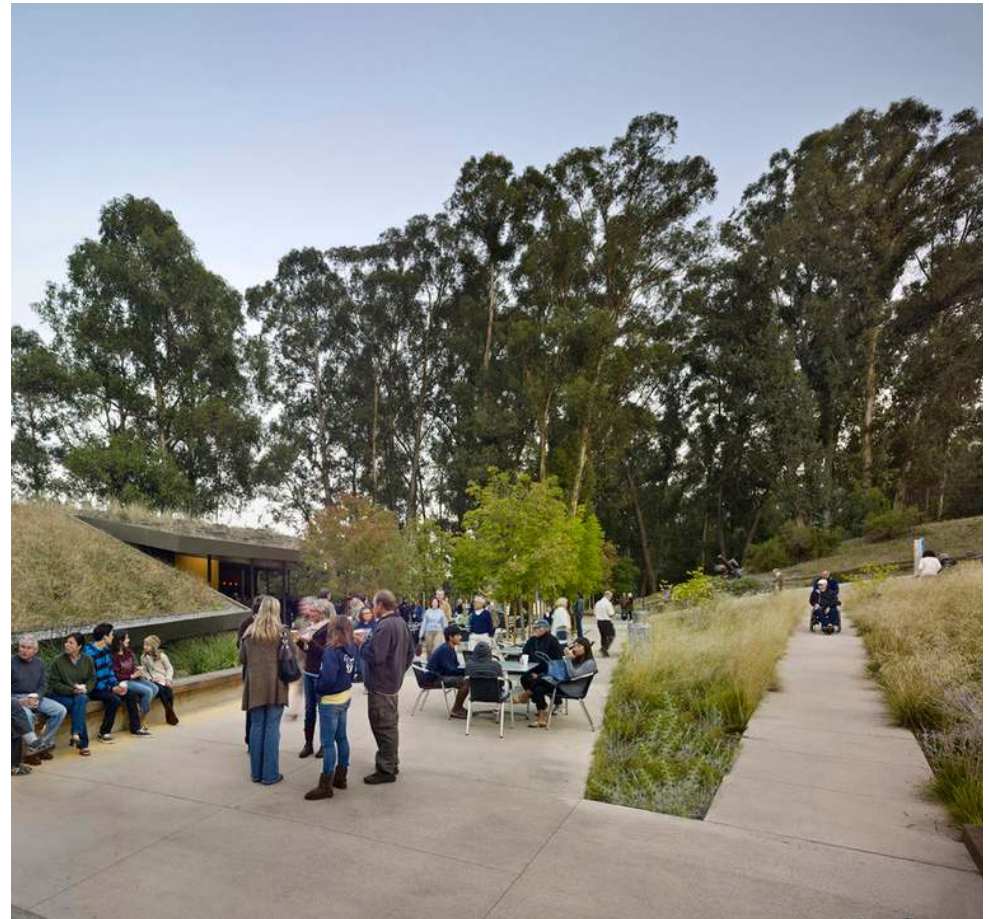
Paths



Benches



CONCEPT DESIGN: MATERIALS



MATERIALS: PATHS

CONCEPT DESIGN PACKAGE



MATERIALS: PLAZAS



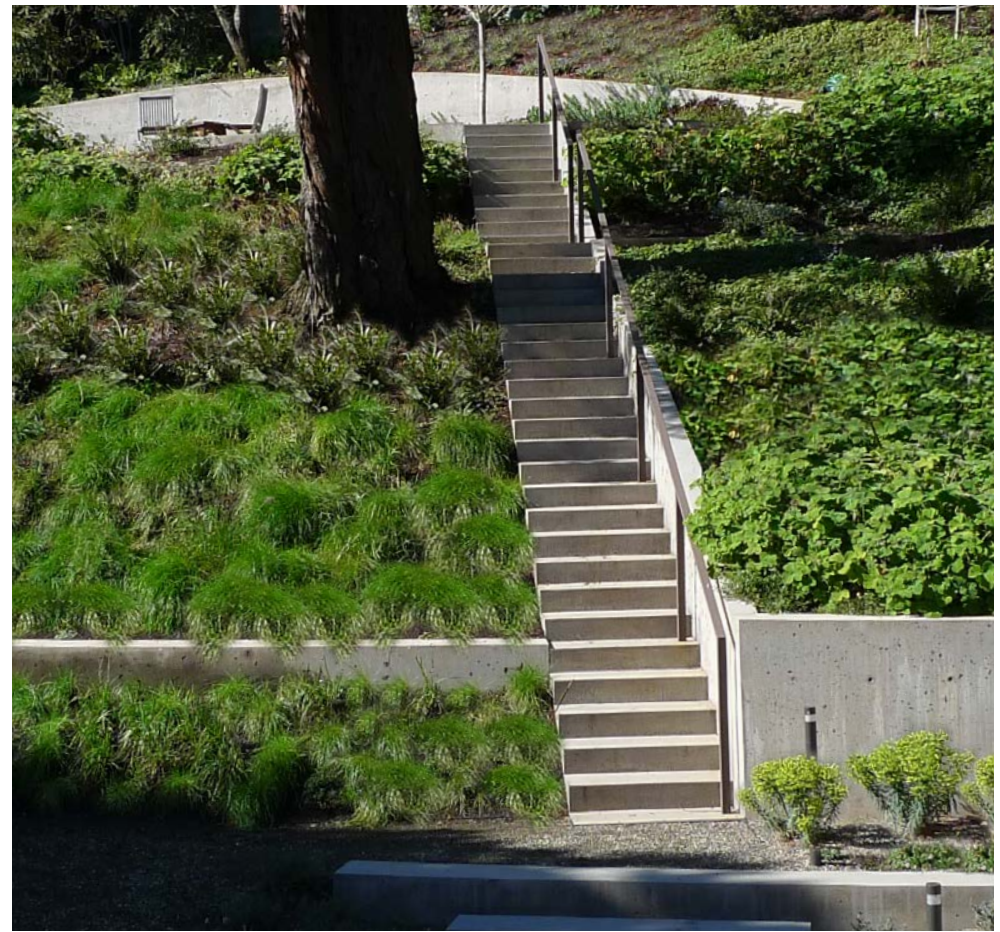
MATERIALS: SITE WALLS

CONCEPT DESIGN PACKAGE



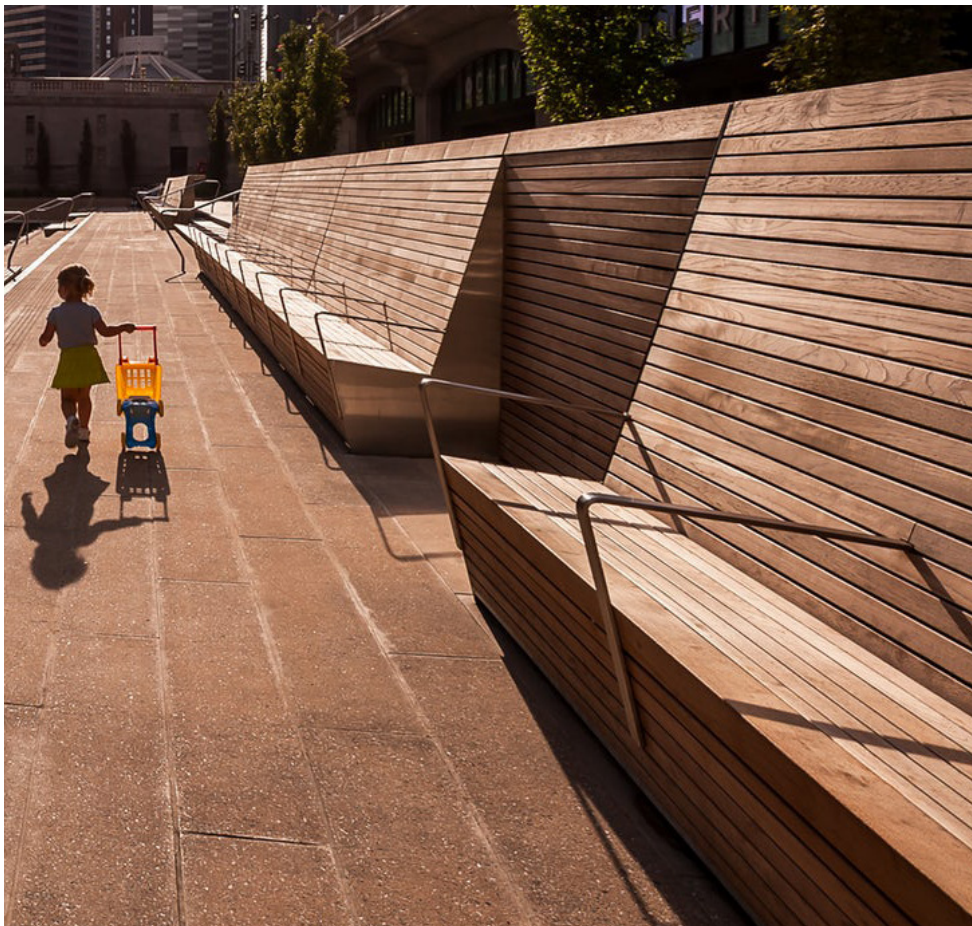
MATERIALS: OVERLOOKS

CONCEPT DESIGN PACKAGE



MATERIALS: STAIRS

CONCEPT DESIGN PACKAGE



MATERIALS: BENCHES

CONCEPT DESIGN PACKAGE

Screening Shrubs



Tea Tree Grove



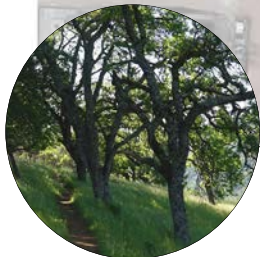
Lawn



Coastal Scrub



Oak Woodland



BAY STREET

LARKIN STREET

HYDE STREET

Street Trees



Plaza



Woodland



Meadow



CONCEPT DESIGN - PLANTING



Lutsko Associates *landscape* - GLS Landscape/Architecture 5.08.2017

PLANTING: STREET TREES

CONCEPT DESIGN PACKAGE





Lutsko Associates landscape - GLS Landscape/Architecture 5.08.2017

PLANTING: PLAZAS

CONCEPT DESIGN PACKAGE





Lutsko Associates landscape - GLS Landscape/Architecture 5.08.2017

PLANTING: PLAZAS

CONCEPT DESIGN PACKAGE





Lutsko Associates landscape - GLS Landscape/Architecture 5.08.2017

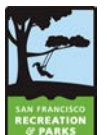
PLANTING: SCREENING SCRUBS



Lutsko Associates landscape - GLS Landscape/Architecture 5.08.2017

PLANTING: TEA TREE GROVE

CONCEPT DESIGN PACKAGE





Lutsko Associates landscape - GLS Landscape/Architecture 5.08.2017

PLANTING: OAK GROVE

CONCEPT DESIGN PACKAGE





Lutsko Associates landscape - GLS Landscape/Architecture 5.08.2017

PLANTING: WOODLAND UNDERSTORY



Lutsko Associates landscape - GLS Landscape/Architecture 5.08.2017

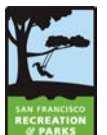
PLANTING: WOODLAND CANOPY



Lutsko Associates landscape - GLS Landscape/Architecture 5.08.2017

PLANTING: MEADOW

CONCEPT DESIGN PACKAGE





Lutsko Associates landscape - GLS Landscape/Architecture 5.08.2017

PLANTING: LAWN

CONCEPT DESIGN PACKAGE





Lutsko Associates landscape - GLS Landscape/Architecture 5.08.2017

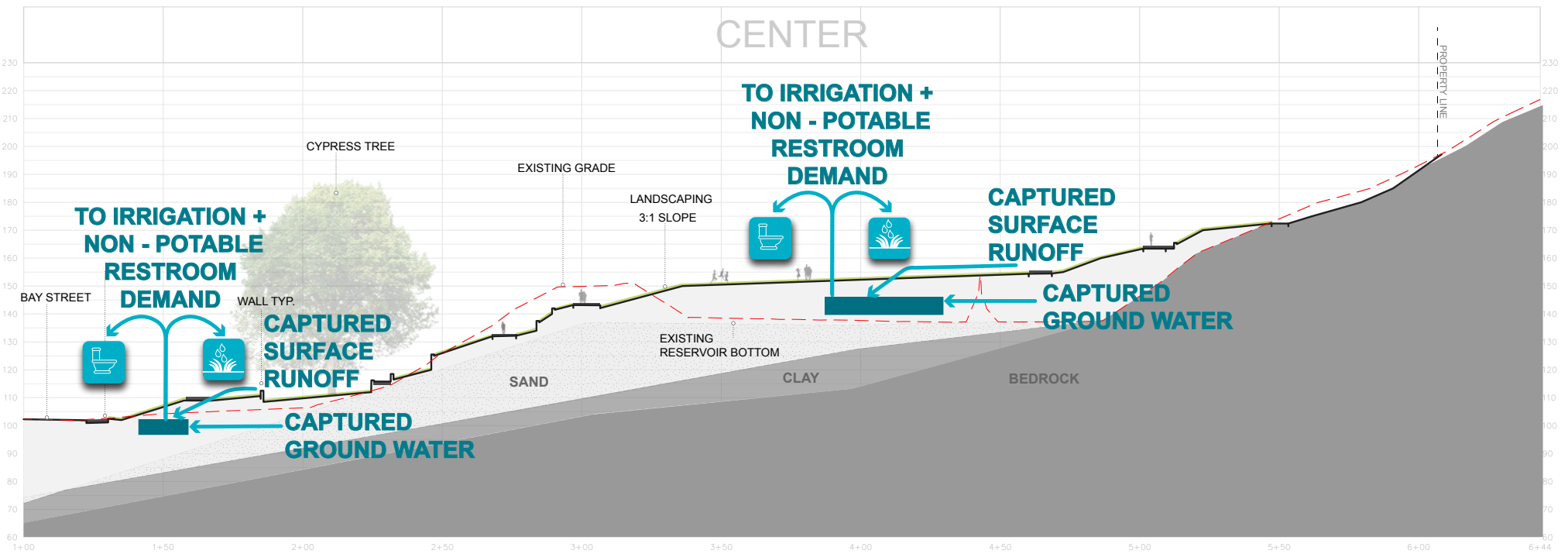
PLANTING: COASTAL SCRUB

CONCEPT DESIGN PACKAGE

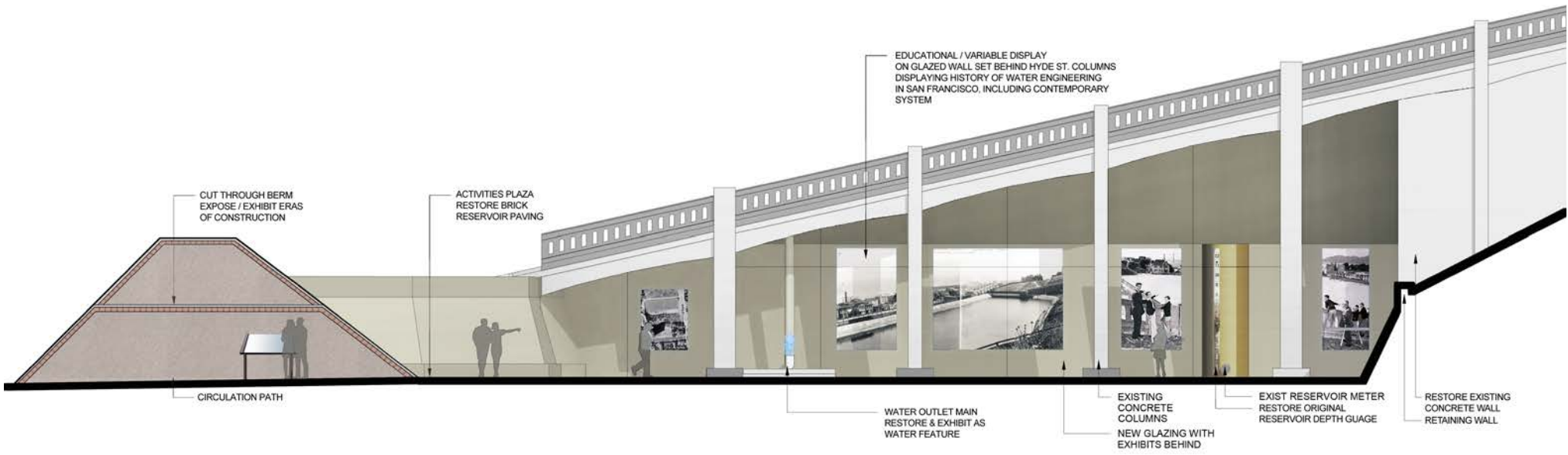




CONCEPT DESIGN - SUSTAINABILITY



CONCEPT DESIGN - SITE WATER STRATEGY



CONCEPT DESIGN - PRESERVATION & EDUCATION

sfac

San Francisco Arts Commission Public Art Program

- Artist Candidate Pool
- Artist Selection Panel
- Community Involvement
- Arts Commission Oversight



Lena Wolff
Tree of Life
Photographer: Bruce Damonte

ARTIST SELECTION & ARTWORK PROPOSAL

How to get involved....

- Sign up for our newsletter for updates about the project and upcoming public meetings:
www.sfartscommission.org
- Attend the public art panel and provide public comment.
- Attend the Artist Orientation Meeting
- Check out the final proposals and give us your feedback

BE A PART OF THE PROCESS



CONCEPT DESIGN - MAIN LAWN

CONCEPT DESIGN PACKAGE



CONCEPT DESIGN - OVERALL VIEW

FRANCISCO PARK



THANK YOU
www.franciscopark.org

CONCEPT DESIGN PACKAGE

