

Francisco Park



COMMUNITY OUTREACH MEETING

January 11, 2017

Joe DiMaggio Rec Center

651 Lombard St

San Francisco, CA 94108



Welcome
Bienvenido
欢迎
Talofa
歡迎



Agenda

1. Meet the Project Team
2. Meeting Objectives
3. History of the Site
4. Preliminary Park Plans
5. Break out Sessions
6. Question & Answer Session
7. Review and Next Steps



Project Team

FPC BOARD OF DIRECTORS

Leslie Alspach, President

SAN FRANCISCO RECREATION AND PARKS

Anne Baskerville, Project Manager

Dana Ketcham, Director of Property Management, Permits and Reservations

Lisa Bransten, Director of Partnerships

Stacy Bradley, Deputy Director of Planning

DESIGN TEAM

450 Architects - Architecture and Design

Lutsko Associates *landscape* - GLS Landscape/Architecture

Sherwood Design Engineers - Civil Engineering

Architectural Resources Group - Historical Consultants

PRE-CONSTRUCTION SERVICES

Cahill Contractors - Pre-Construction Services



Meeting Intentions

- Provide an opportunity for public input on the plans
- Inform the community of the park's preliminary concept
- Review comments from Online Survey and Community Meetings #1 & #2
- Encourage a transparent design process
- Actively listen to community feedback



Ground Rules

In order to keep to the agenda and allotted time, please:

- Put your name on the sign-in sheet
- Direct comments to the facilitator
- Raise your hand to speak
- Keep to the agenda
- Please silence cell phones
- Hold questions until the discussion at the end

Working together will make this a productive meeting!



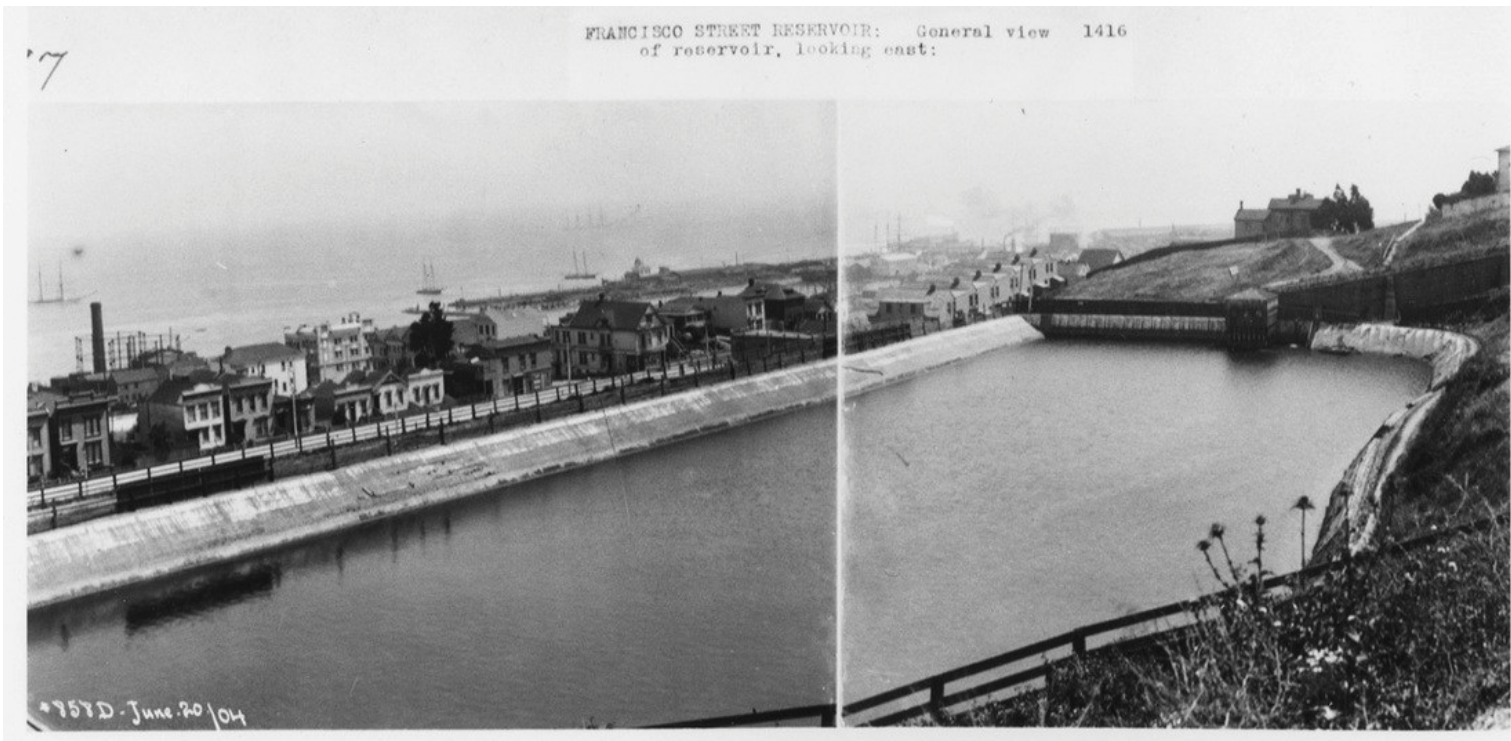
History



WOODEN FLUME



WOODEN FLUME

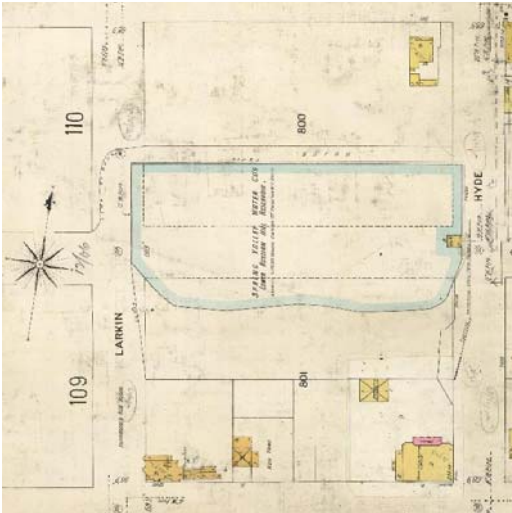


FRANCISCO STREET RESERVOIR - LOOKING EAST



FRANCISCO PARK
—CONSERVANCY—

History



EARLY SITE PLAN



ARIAL IMAGE



SOURCE: SAN FRANCISCO PUBLIC LIBRARY



SOURCE: SAN FRANCISCO PUBLIC LIBRARY



Part II: Existing Context



PHOTO: DAVID YU

VIEW FROM HYDE AND CHESTNUT STREETS



Part II: Existing Context



VIEW FROM HYDE AND BAY



Part II: Existing Context



VIEW FROM LARKIN AND CHESTNUT



Timeline

- 1859** Reservoir constructed
- 1940** Reservoir became obsolete due to opening of Lombard Reservoir
- 1958-2008** PUC attempts to sell and develop land
- 2007** First community meeting held to discuss future of reservoir site
- 2008** Board of Supervisors reaffirms reservoir's status as open space (resolution 502.08)
- 2008-2011** 4 community meetings held, consensus emerges around building a public park on the site



Timeline

June 2011 Community volunteers form Francisco Reservoir Working Group (Aquatic Park Neighbors, North Beach Neighbors, Russian Hill Improvement Association, Russian Hill Neighbors)

May 2012 Public community meeting held at Galileo High School with 75+ attendees

2011-2014 Working Group meets with 25+ neighborhood associations, advocacy groups, and local schools to discuss plans and ideas for open space

July 2014 Board of Supervisors votes unanimously to approve the jurisdictional transfer of the Francisco Reservoir from the SFPUC to Recreation and Parks Department

September 2014 Francisco Park Conservancy is created and Board of Directors is installed



Timeline

April 2015 The City completes a topographical survey of the site; Rec & Park files a Preliminary Project Assessment with SF Planning Department

July 2016 Francisco Park Conservancy and Rec & Park finalize their partnership agreement

September 2016 Francisco Park Conservancy and SF Rec & Park conduct formal community outreach process to solicit park design: host Community Meeting #1 at Moscone Rec Center

November 2016 Community Meeting #2 at Betty Ong Rec Center

January 2017 Community Meeting #3 at Joe DiMaggio Rec Center

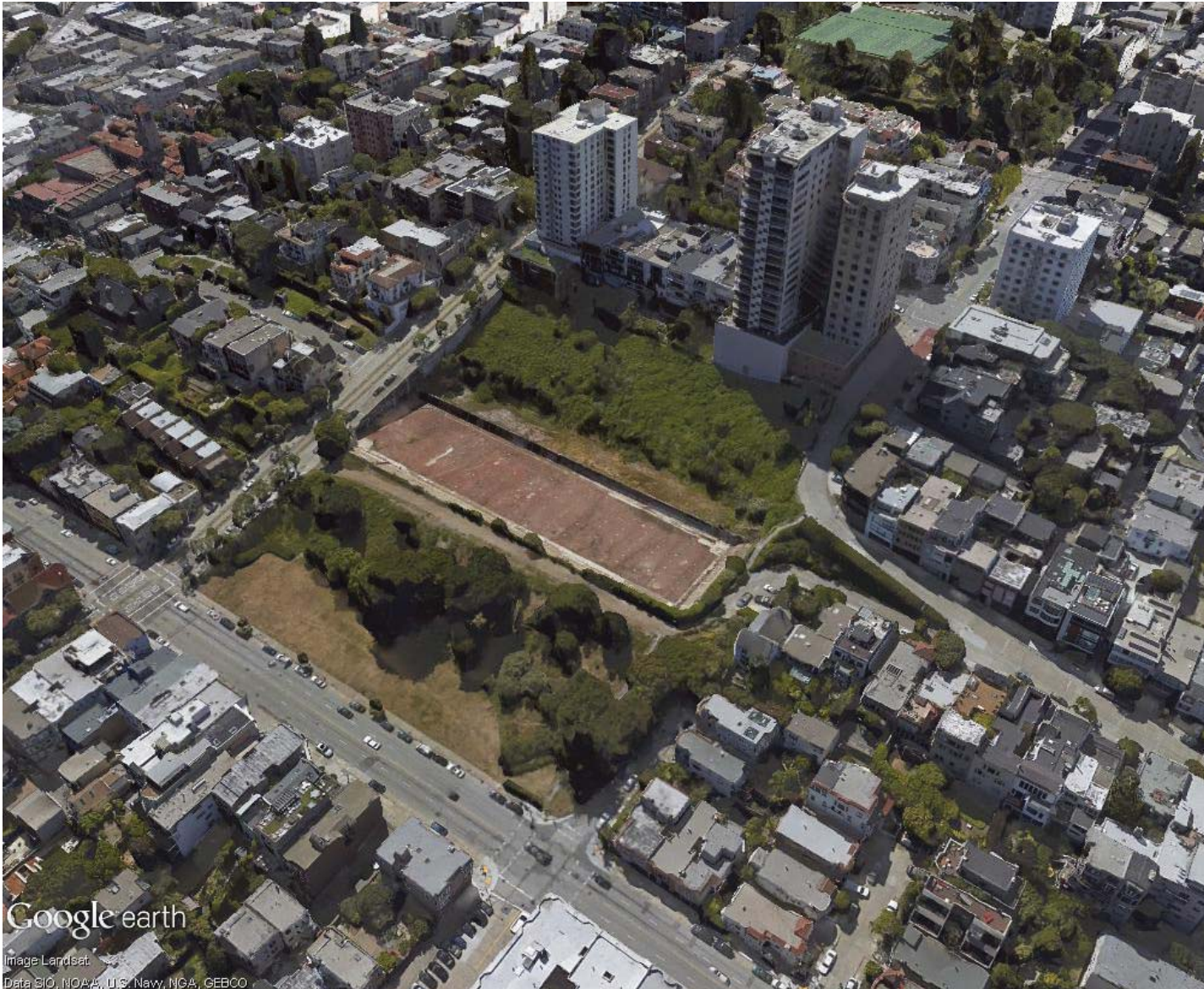


Upcoming Meetings and Schedule

- Civic Design Review Board: 2017
- Visual Arts Commission Review: 2017
- Rec & Park Commission Review: 2017
- Planning Department Review (CEQA): 2017
- Mayor's Office of Disability: 2017/2018
- Building Department Review: 2017/18
- San Francisco Public Utilities Commission: 2017/18
- Department of Public Works Review: 2017/18
- Municipal Transportation Agency Review: 2017/18
- Other City Agency Reviews (As Required): 2017/18
- Begin Construction: Spring 2018
- Grand Opening: 2019



Part III: Preliminary Park Plans



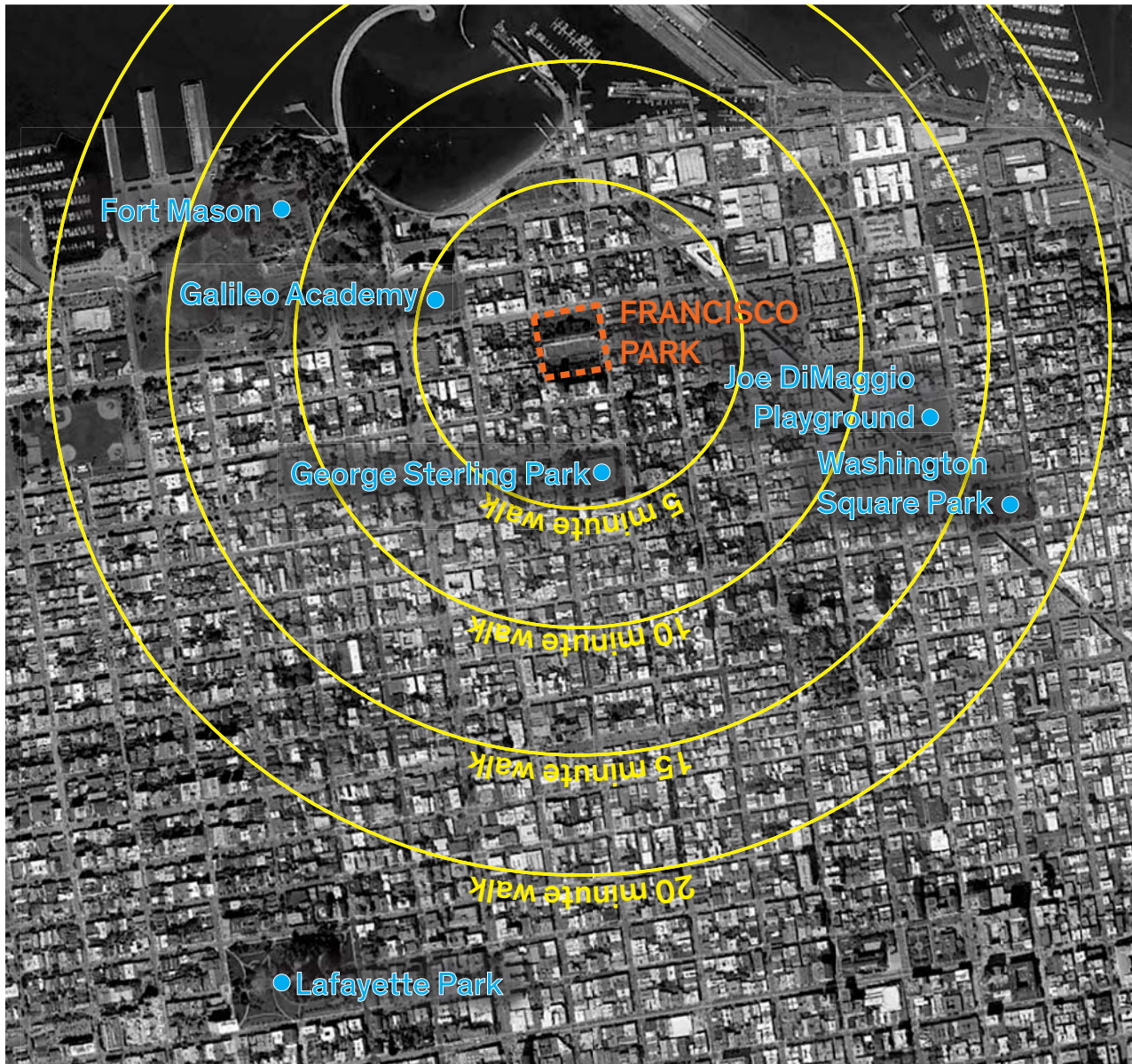
**RICHARD PARKER
450 ARCHITECTS**

BIRDS EYE VIEW



Existing Context

NEIGHBORHOOD PARKS AND PLAYGROUNDS



NTS  NORTH



FRANCISCO PARK
—CONSERVANCY—

Existing Context

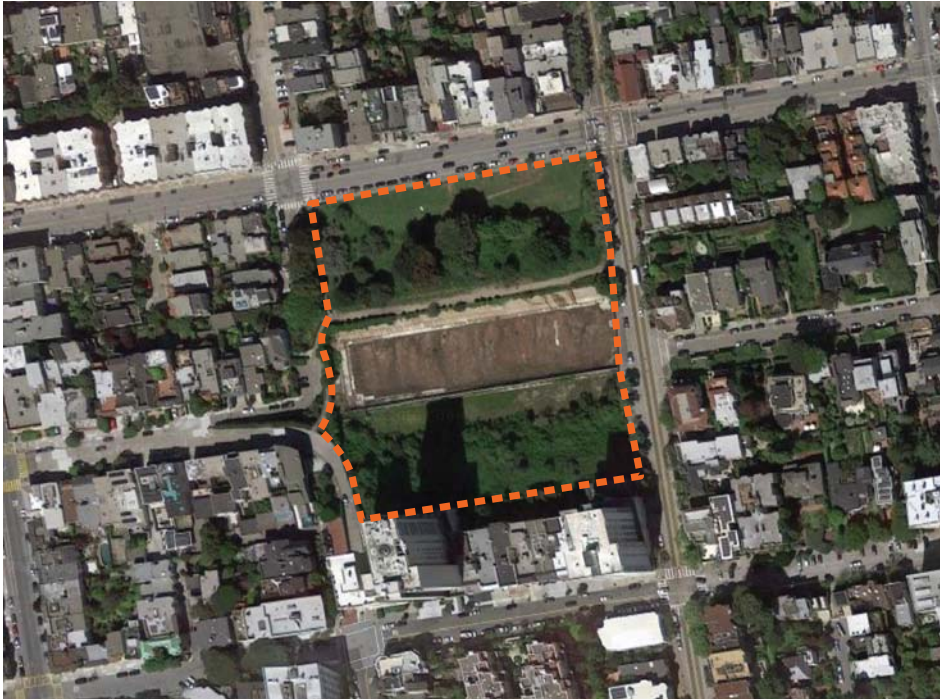


NTS ↑ NORTH



Park Scale

FRANCISCO PARK



4.2 ACRES

JOE DIMAGGIO PLAYGROUND

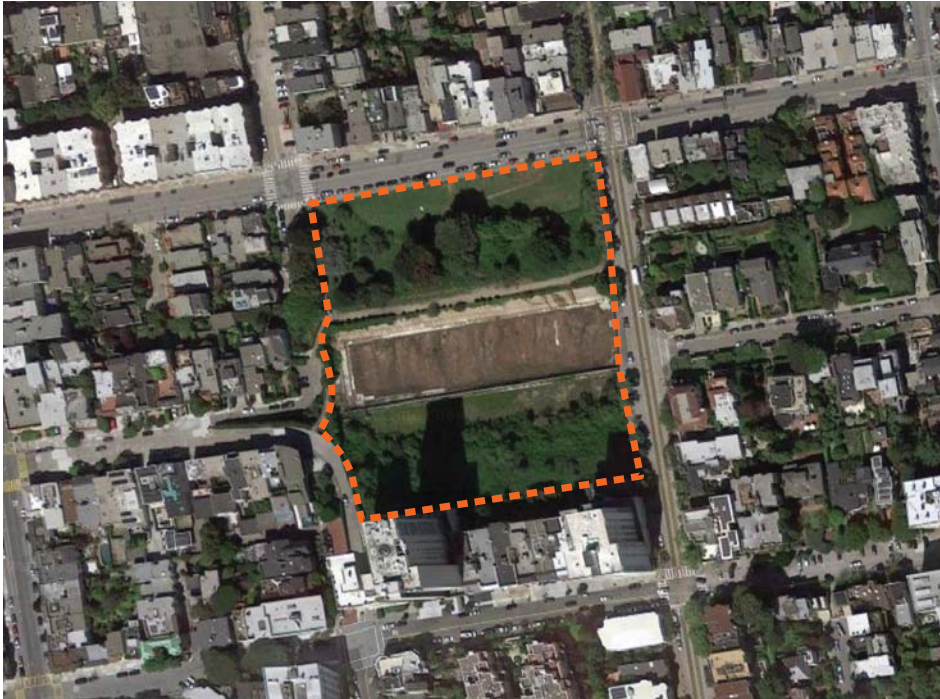


2 ACRES



Park Scale

FRANCISCO PARK



4.2 ACRES

WASHINGTON SQUARE PARK

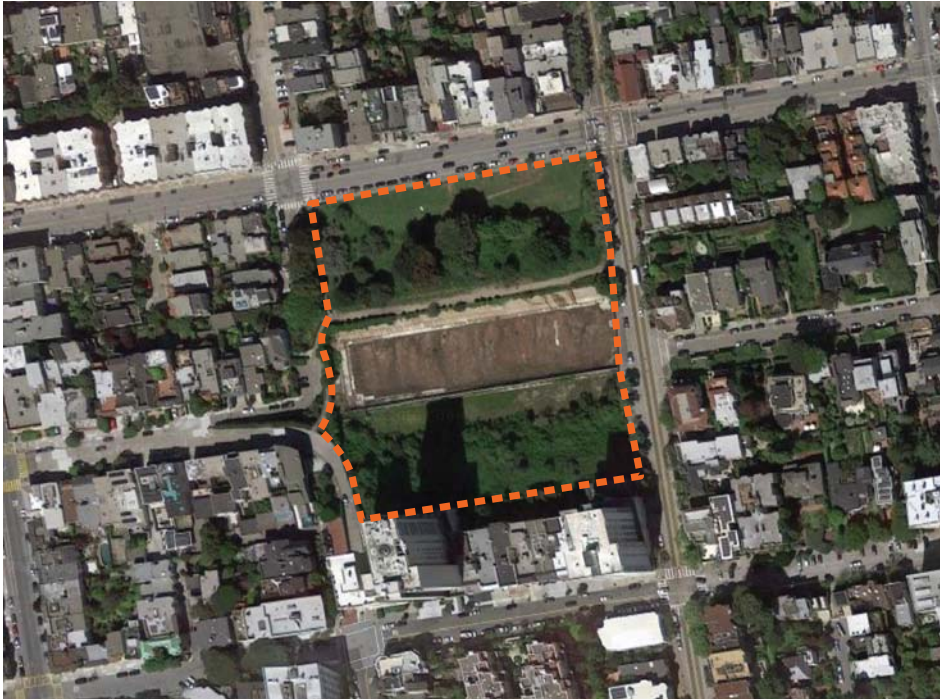


2.26 ACRES



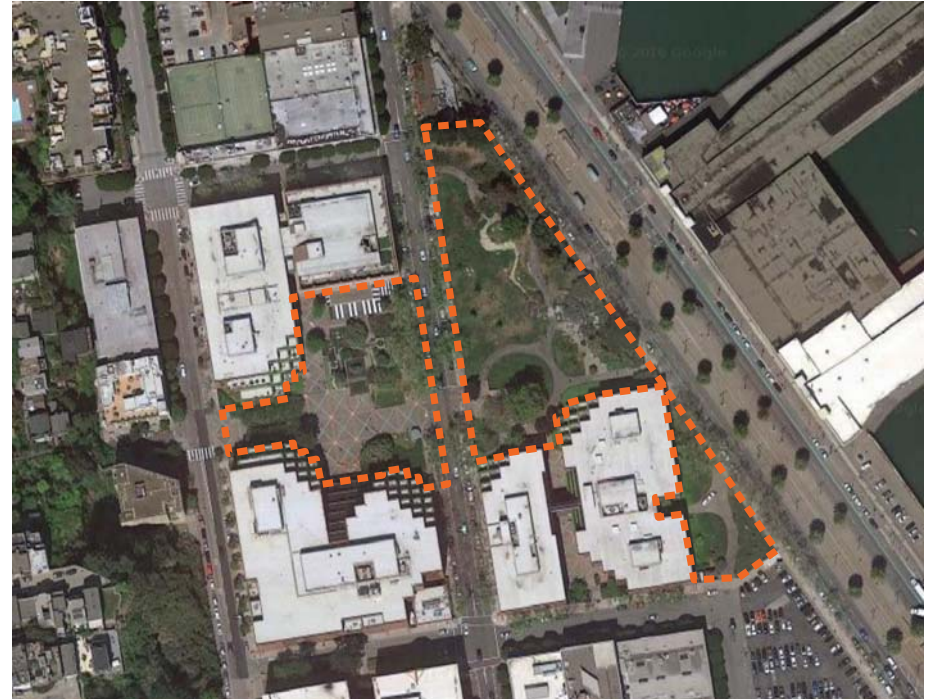
Park Scale

FRANCISCO PARK



4.2 ACRES

LEVIS PLAZA

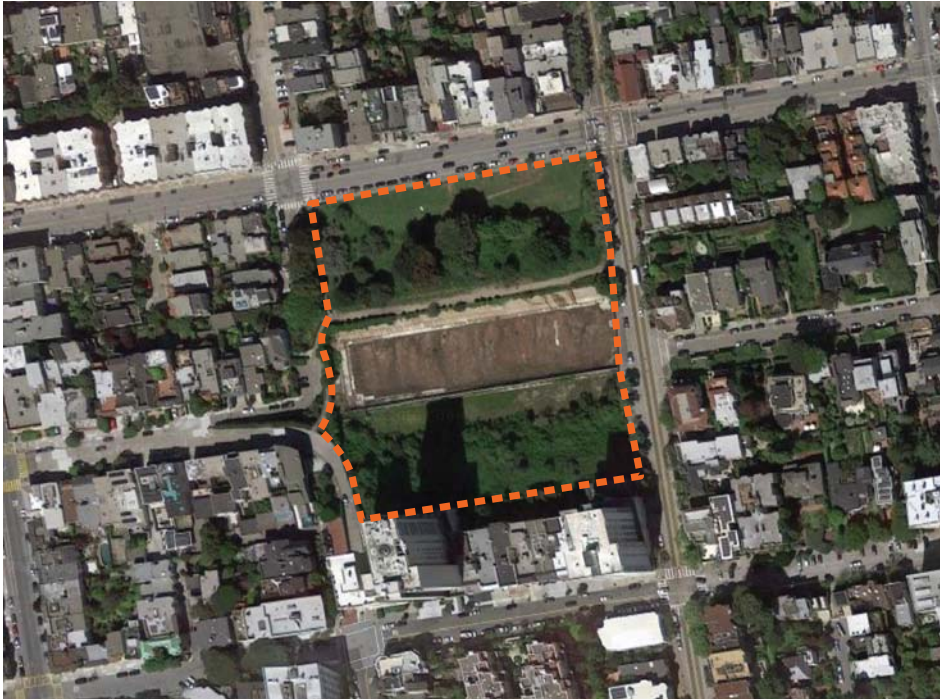


5 ACRES



Park Scale

FRANCISCO PARK



4.2 ACRES

LAFAYETTE PARK

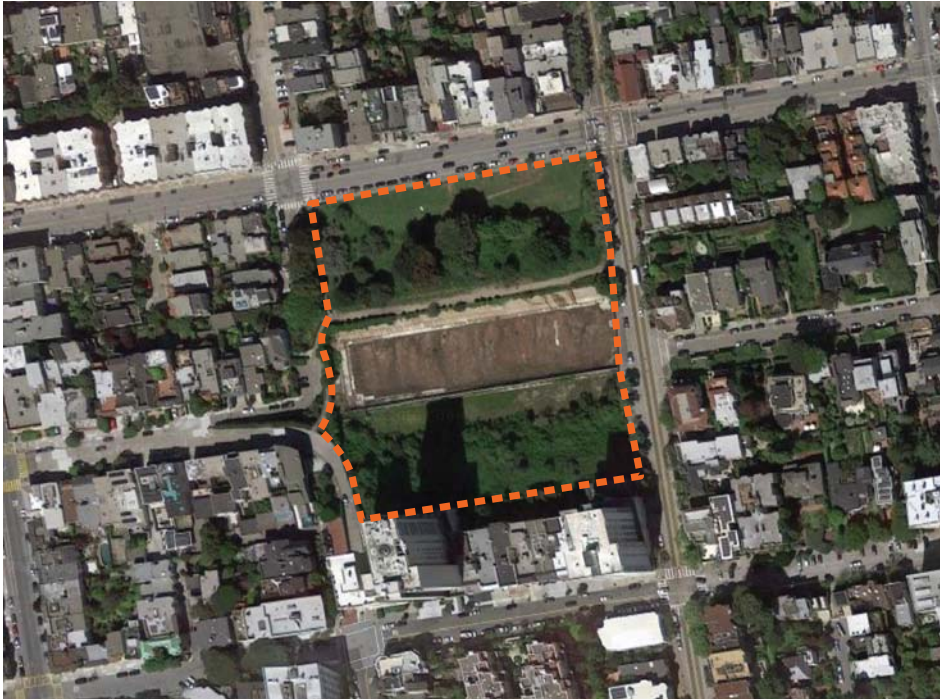


11.49 ACRES



Park Scale

FRANCISCO PARK



4.2 ACRES

ALAMO SQUARE PARK

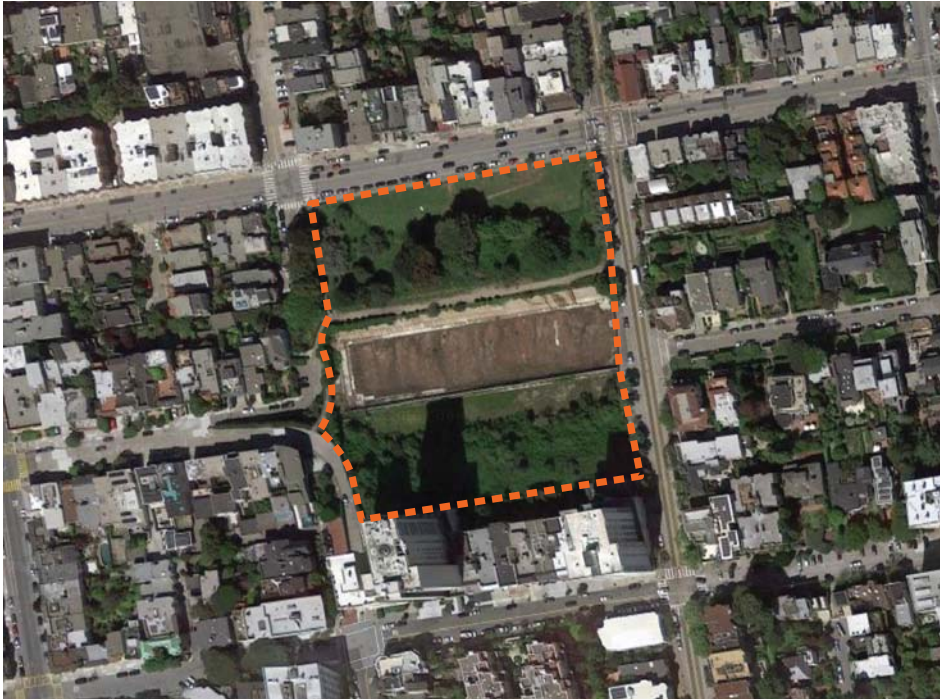


12.7 ACRES



Park Scale

FRANCISCO PARK



4.2 ACRES

DELORES PARK



15.94 ACRES



A Neighborhood Park

SF Recreation & Parks has designated this a “neighborhood park” as opposed to a “destination park”. Examples of other parks include:

Destination Parks



- Golden Gate Park
- Lake Merced Park
- McLaren Park

Neighborhood Parks



- Alamo Square
- Lafayette Park
- Duboce Park



Francisco Park - Slope



VIEW FROM HYDE AND BAY



Francisco Park - Slope





FRANCISCO PARK
—CONSERVANCY—

Conceptual Design Sketches






Conceptual Design Sketches





Online Design Survey



FRANCISCO PARK

HOME

ABOUT

HISTORY

PLANS & IDEAS

IMPORTANCE

NEWS

DONATE

SUPPORTERS

CONTACT

FRANCISCO PARK DESIGN SURVEY

We want to hear from you! The Francisco Park design team is eager to incorporate community feedback into the park design.

If there are additional features of the park you would like to see which are not listed below, please describe them in the 'Other' comments box at the end of the survey.

We have been thrilled to receive hundreds of responses to our survey so far and we are carefully considering all submissions. We will begin to share results of the survey at our next community meeting on Wednesday, January 11 from 6:00-7:30 at the Joe DiMaggio Clubhouse, 651 Lombard Street. Please join us as we continue the conversation!

Contact us with any questions at info@franciscopark.org.

Thank you!

PLEASE RATE EACH OF THE FOLLOWING POTENTIAL PARK FEATURES FROM LOWEST TO HIGHEST PRIORITY. *

	Lowest Priority	Low Priority	Neutral	High Priority	Highest Priority
Children's Playground	<input type="radio"/>	<input type="radio"/>	<input type="radio"/>	<input type="radio"/>	<input type="radio"/>
Dog Run	<input type="radio"/>	<input type="radio"/>	<input type="radio"/>	<input type="radio"/>	<input type="radio"/>
Community Garden	<input type="radio"/>	<input type="radio"/>	<input type="radio"/>	<input type="radio"/>	<input type="radio"/>
Quiet Space	<input type="radio"/>	<input type="radio"/>	<input type="radio"/>	<input type="radio"/>	<input type="radio"/>
Benching/Seating	<input type="radio"/>	<input type="radio"/>	<input type="radio"/>	<input type="radio"/>	<input type="radio"/>
Open Space	<input type="radio"/>	<input type="radio"/>	<input type="radio"/>	<input type="radio"/>	<input type="radio"/>
Adult Exercise Structures	<input type="radio"/>	<input type="radio"/>	<input type="radio"/>	<input type="radio"/>	<input type="radio"/>
Plants/Trees	<input type="radio"/>	<input type="radio"/>	<input type="radio"/>	<input type="radio"/>	<input type="radio"/>
Lighting/Safety	<input type="radio"/>	<input type="radio"/>	<input type="radio"/>	<input type="radio"/>	<input type="radio"/>
Sustainability	<input type="radio"/>	<input type="radio"/>	<input type="radio"/>	<input type="radio"/>	<input type="radio"/>

OTHER PRIORITY FEATURES AND COMMENTS

THANK YOU FOR COMPLETING THE SURVEY! PLEASE ENTER YOUR EMAIL IF YOU WOULD LIKE TO SUBSCRIBE TO OUR NEWSLETTER.

SUBMIT

- Launched in October 2016
- URL: <https://www.franciscopark.org/october-2016-survey/>
- 509 responses to date. 205 since January 1. Thank you!



Online Design Survey/Results

Section 1: Design Survey Results, in order of priority based on responses:

Highest priorities:	(Average Score)
1. Plants/Trees	4.2
2. Lighting/Safety	4.1
3. Open Space	3.9
4. Sustainability	3.8
5. Benching/Seating	3.7
6. Children's Playground	3.5
7. Quiet Space	3.2
8. Community Garden	3.0
9. Dog Run	2.6
10. Adult Exercise Structures	2.6



Online Design Survey/Results Contd.

Section 2: Other Priority Features and Comments (write-in)

Most common responses:

- In support of a soccer field/playing field: 115
- Against a soccer field/playing field 7
- Emphasis on safety and security: 25
- Native plants/trees: 16
- In favor of a dog run: 11
- Against a dog run: 4
- Picnic tables: 8
- Incorporation of hisorical aspects of the site: 8
- Food/beverage opportunities: 4



Community Feedback

Feedback was recorded and incorporated in to the park concept design.

- Quotes below are from the community engagement meetings and online community survey (<https://www.franciscopark.org/october-2016-survey/>)

“This is a special space, requiring visionary plans and careful stewardship. It should be a model for an urban park in San Francisco, and feature as many sustainable aspects as possible.”

“No light pollution, I hope that park lighting won’t block the night time views”

“Habitat, yes to birds, bees and pollinators!”

“Water could be the unifying theme of the park: educationally throughout, a water feature for children, a part of the public art”

“Reserve highest space for best views.”

“It would be great to add a good quality turf soccer field with lights . . . Better athletes, better people!”

“Community Garden!”

“I’d love to see a fully enclosed and partitioned dog park”

“...wild and natural children’s playground, flowers to pick.”



Community Feedback

“Please focus on providing clear views and vistas for ALL people”

“I would like the history of the reservoir and education about how San Francisco gets its fresh water to be available.”

“Soccer field focused on youth use is greatly needed! Kids & family life need more support in North Beach!”

“Love green roofs and modern restrooms”

“What neighbors need is an area to congregate with their dogs and children, and an open space that can be shared by all.”

“Anything that is dog friendly would be absolutely amazing. There are no off leash dog areas in North Beach, or north Russian Hill. It would be great to have a place to run my dog!.”

“Sculptures reflecting the City’s multicultural heritage”



Constraints

- TOPOGRAPHY
- ADA ACCESSIBILITY
- CALIFORNIA ENVIRONMENTAL EQUALITY ACT
- SAFETY
- MAINTENANCE



FRANCISCO PARK
—CONSERVANCY—

Conceptual Design





Accessibility



- Drop-off/ADA parking space
- Broad pathways
- Make park fully ADA accessible
- Variety of surfaces and textures





Open Spaces and View Terraces



- Naturalistic landscaping
- Benches with back rests
- Integrate cable car into views/vistas
- Celebrate view axis
- Intimate spaces
- Athletic practice area
- Terraced seating
- Flowers, fruit trees, vegetables
- No rigid formal design
- No sitting water





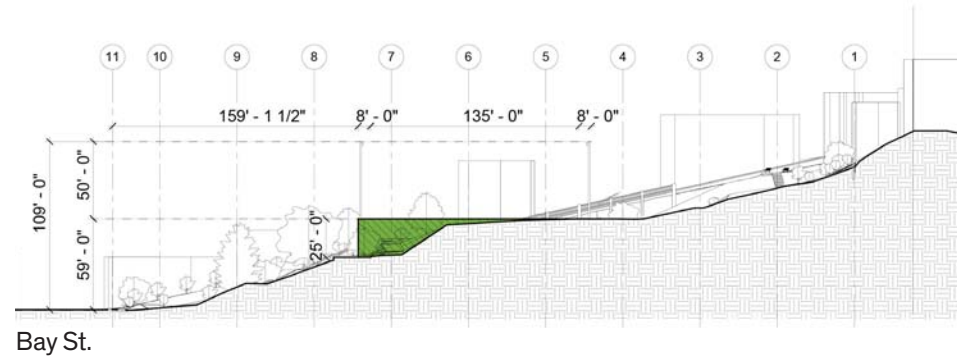
FRANCISCO PARK
—CONSERVANCY—

Athletic Practice Area



CONCEPTUAL PLAN WITH UNDER 10 SOCCER FIELD
(135FT X 180FT)

- Parking
- ADA Accessibility
- Turf



SECTION WITH UNDER 10 SOCCER FIELD

- Must suit the majority of the community
- California Environmental Quality Act
- Heritage Trees

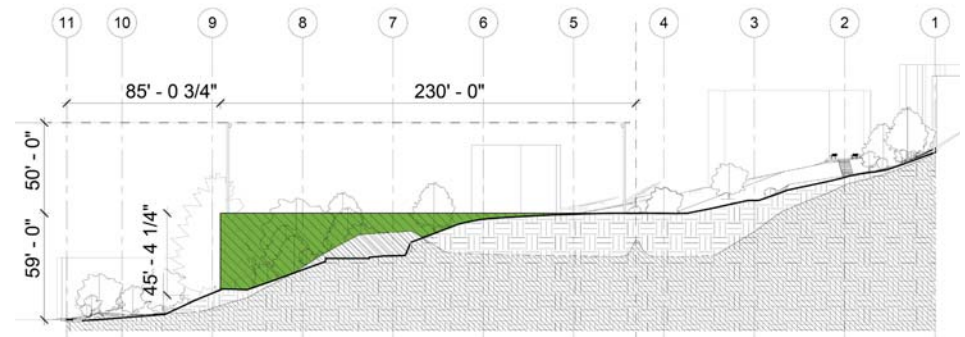


Athletic Practice Area



CONCEPTUAL PLAN WITH REGULATION SOCCER FIELD
(230FT X 360FT)

- Parking
- ADA Accessibility
- Turf

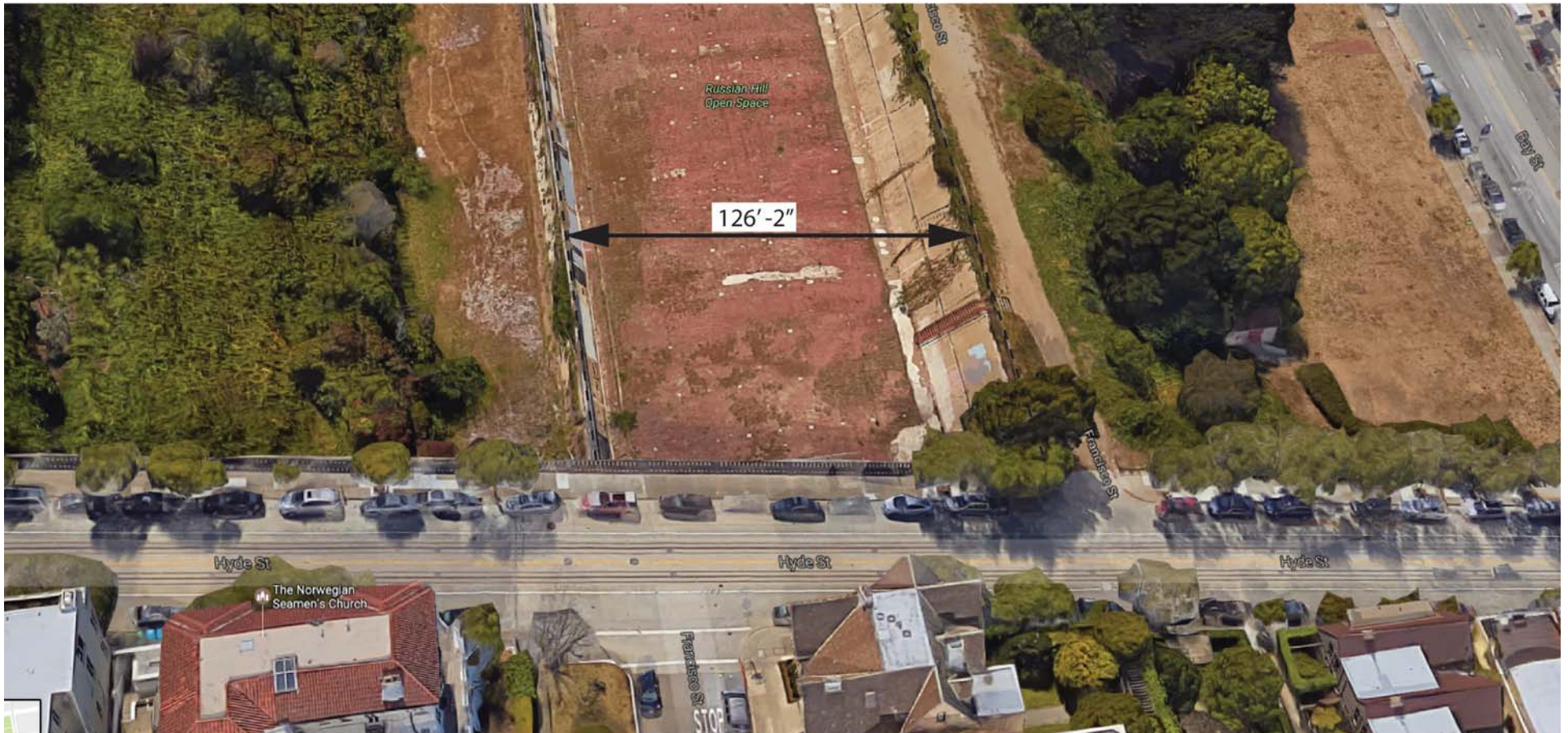


SECTION WITH UNDER 10 SOCCER FIELD

- Must suit the majority of the community
- California Environmental Quality Act
- Heritage Trees



Athletic Practice Area





Athletic Practice Area





Children's Playground

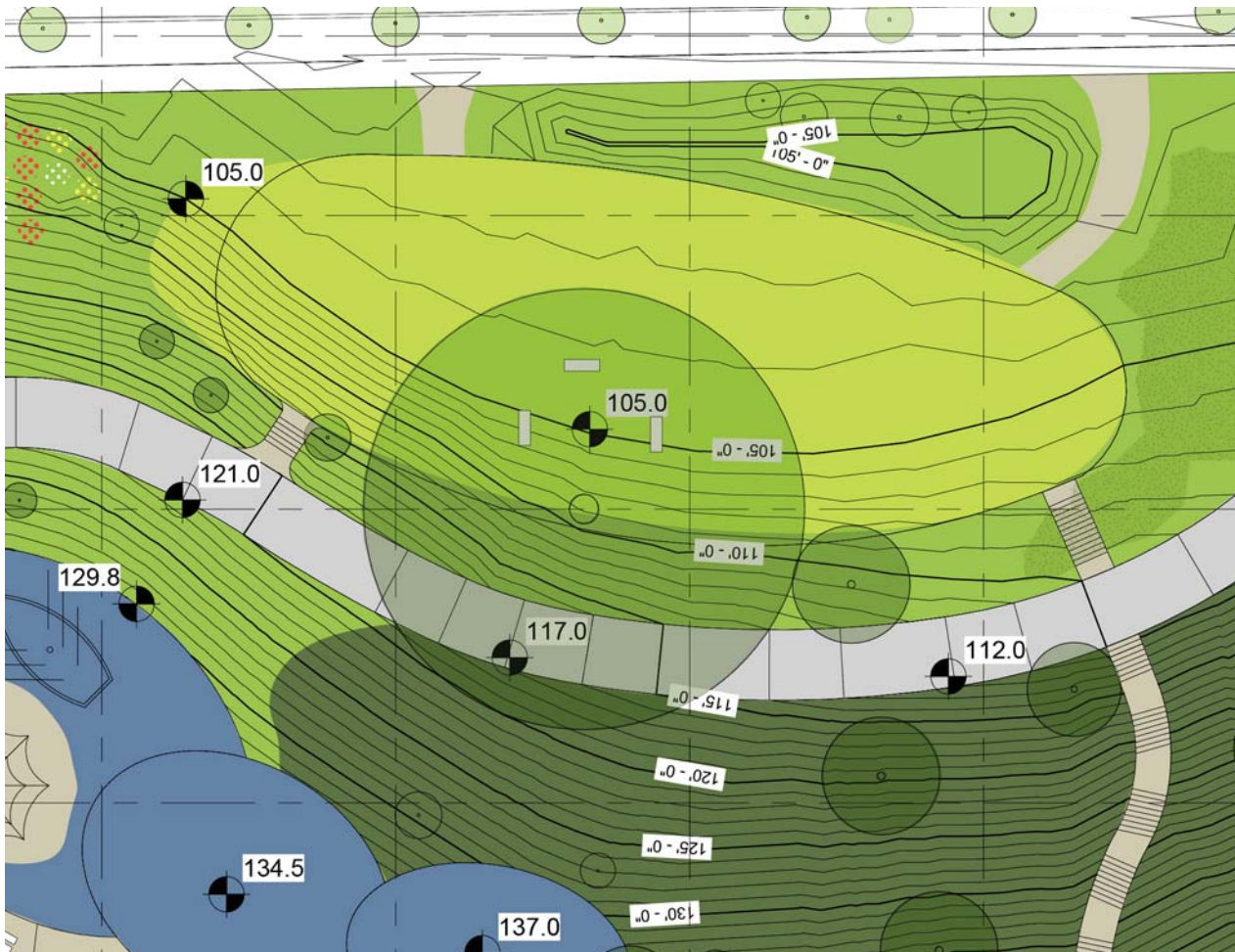


- Natural (colors/materials)
- Something for all ages (big swings, big slide)
- Integrate plants (flowers, fruit trees)
- Per needs assessment
- Interactive water feature
- Integrate playground equipment into landscape
- Not too much rubber play surface





Dog Run



- Natural surfaces
- Enclosed area
- Trash cans
- Access to terrain
- Separate area for small and large dogs
- Secure entry gate
- No asphalt
- No artificial turf
- Not just on Bay street
- No chain link fencing



Community, Art and Education



- History of water capture, storage, and conveyance in San Francisco
- Artwork celebrating the history of the reservoir
- Education on the contemporary water systems in the park
- Teach science on site
- California Environmental Quality Act



Benjamin Franklin House - Philadelphia



High Line - New York City



FRANCISCO PARK
— CONSERVANCY —

Community Garden



- Per community responses
- Garden equipment storage in convenience building





FRANCISCO PARK
—CONSERVANCY—

Plazas





Restrooms



- Discreet buildings
- Living roof
- Safe & well lit
- Easy to clean
- Natural ventilation
- Not a bunker

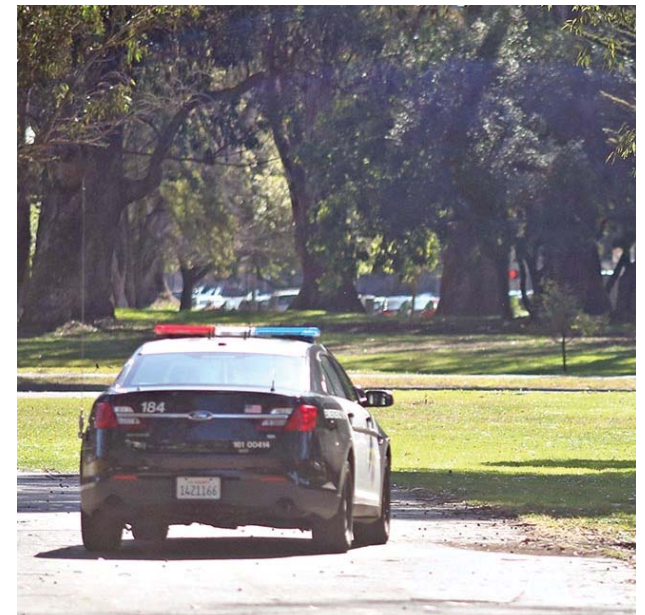




Safety and Lighting



- Safety
- Low ground lighting
- Path large enough for EMT/police vehicles to drive on site
- Eco-friendly
- No modern style lights Classical design park lighting
- Reduce light pollution





Sustainability - Plants



- Habitats for birds, bees & pollinators
- Low maintenance plantings
- Water reuse
- Permaculture
- Plant Guilds
- No pesticides
- No toxic chemicals
- <http://www.audubon.org/native-plants>





Sustainability - Wildlife



- Habitats for birds, bees & pollinators
- Low maintenance plantings
- Water reuse
- No pesticides
- No toxic chemicals
- <http://www.audubon.org/native-plants>





Sustainability - Water/Soil



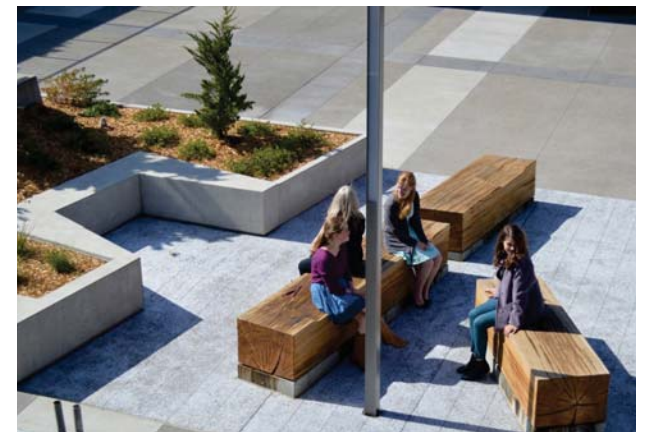
RAINWATER HARVESTING

- Potable water
- Rain water
- Storm water
- Sub surface water
- Well water
- Grey water
- Black water



FRANCISCO PARK
—CONSERVANCY—

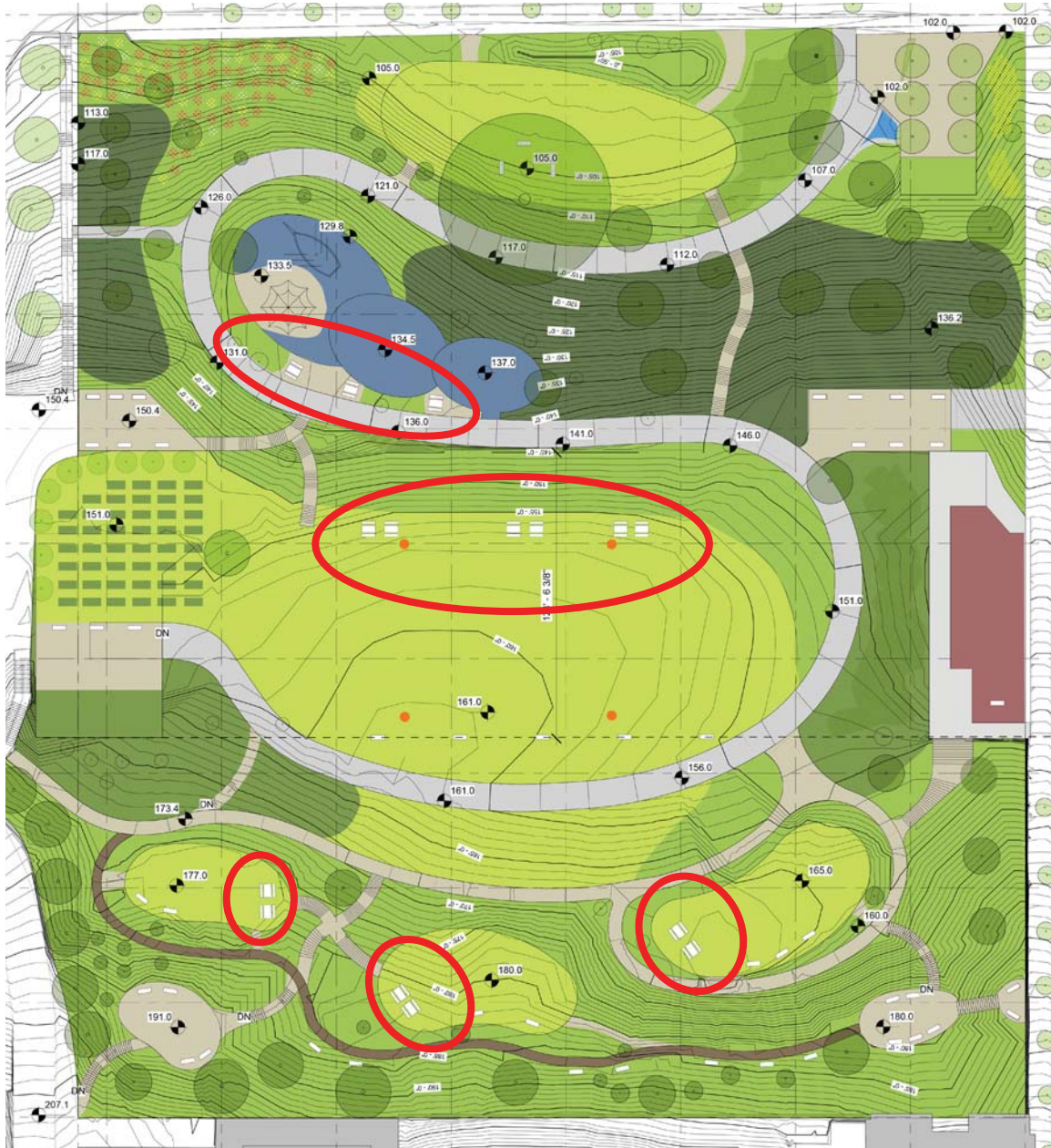
Benches and Seating





FRANCISCO PARK
—CONSERVANCY—

Picnic Areas





Paths and Railings





FRANCISCO PARK
— CONSERVANCY —

Signage



- Rec and Park Department signage
- Donor recognition
- ADA
- Educational signage
- Wayfinding





Existing View





Proposed View



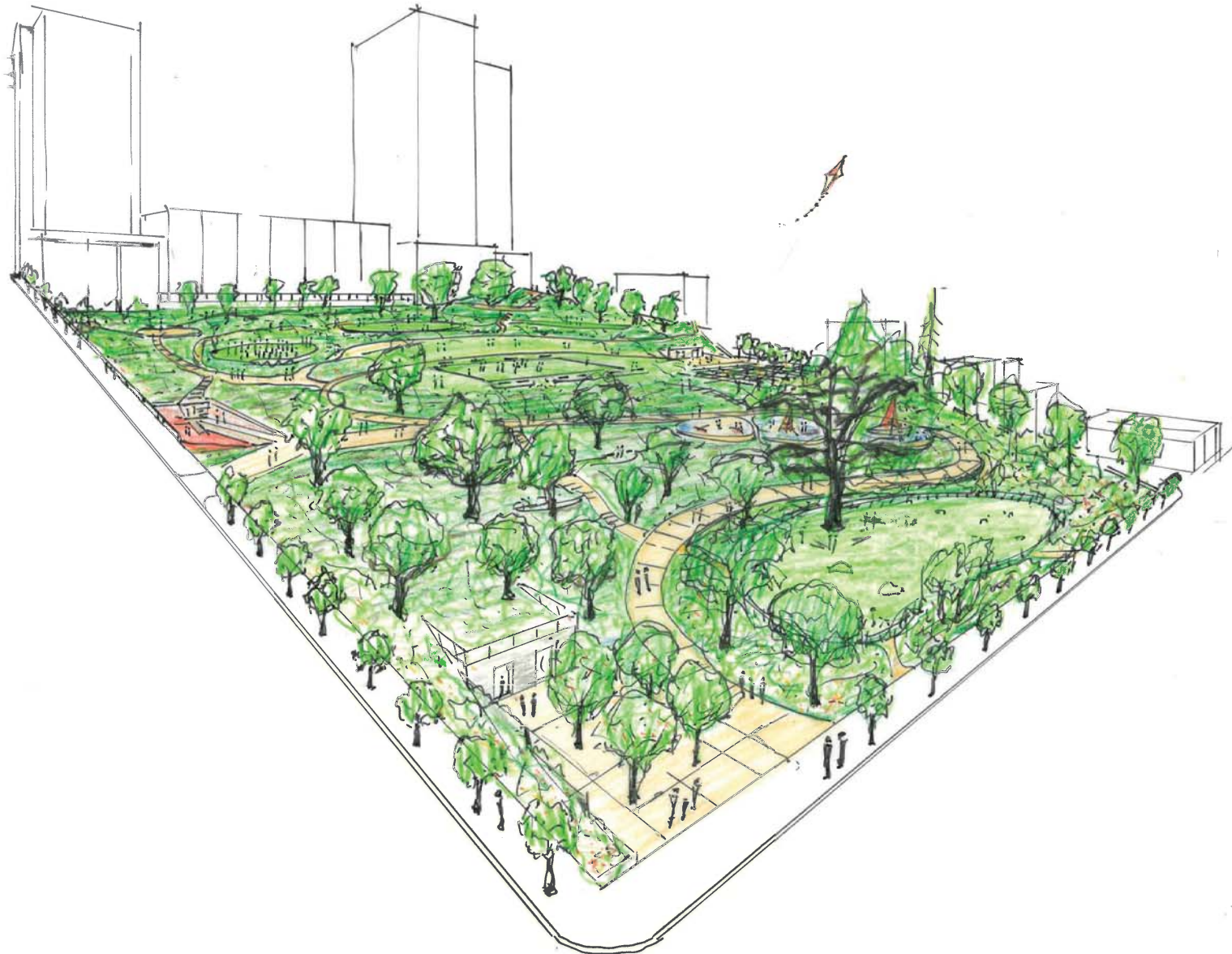


Existing View





Proposed View





Proposed Park Rules

As a “neighborhood park,” certain park activities will be allowed with a permit issued by RPD and other activities will not be permitted.

Activities Allowed by Permit

- Picnics
- Soccer practices
- Weddings
- Film and photography

Proposed Park Rules

- No alcohol
- No smoking
- No fires/cooking
- No camping
- No littering
- No amplified sound
- No dangerous or disorderly conduct
- No aircrafts, large balloons or drones
- No temporary structures
- No wheeled conveyances, except wheelchairs, strollers and small toys
- No concessions/commercial use
- No off-leash animals, except inside enclosed dog run



Breakout Groups

Group #1

- Open Space / View Terraces
- Athletic Practice Area

Group #2

- Children's Playground
- Dog Run

Group #3

- Plazas and Restrooms
- ADA Accessibility

Group #4

- Art, History and Education
- Donor Recognition

Group #5

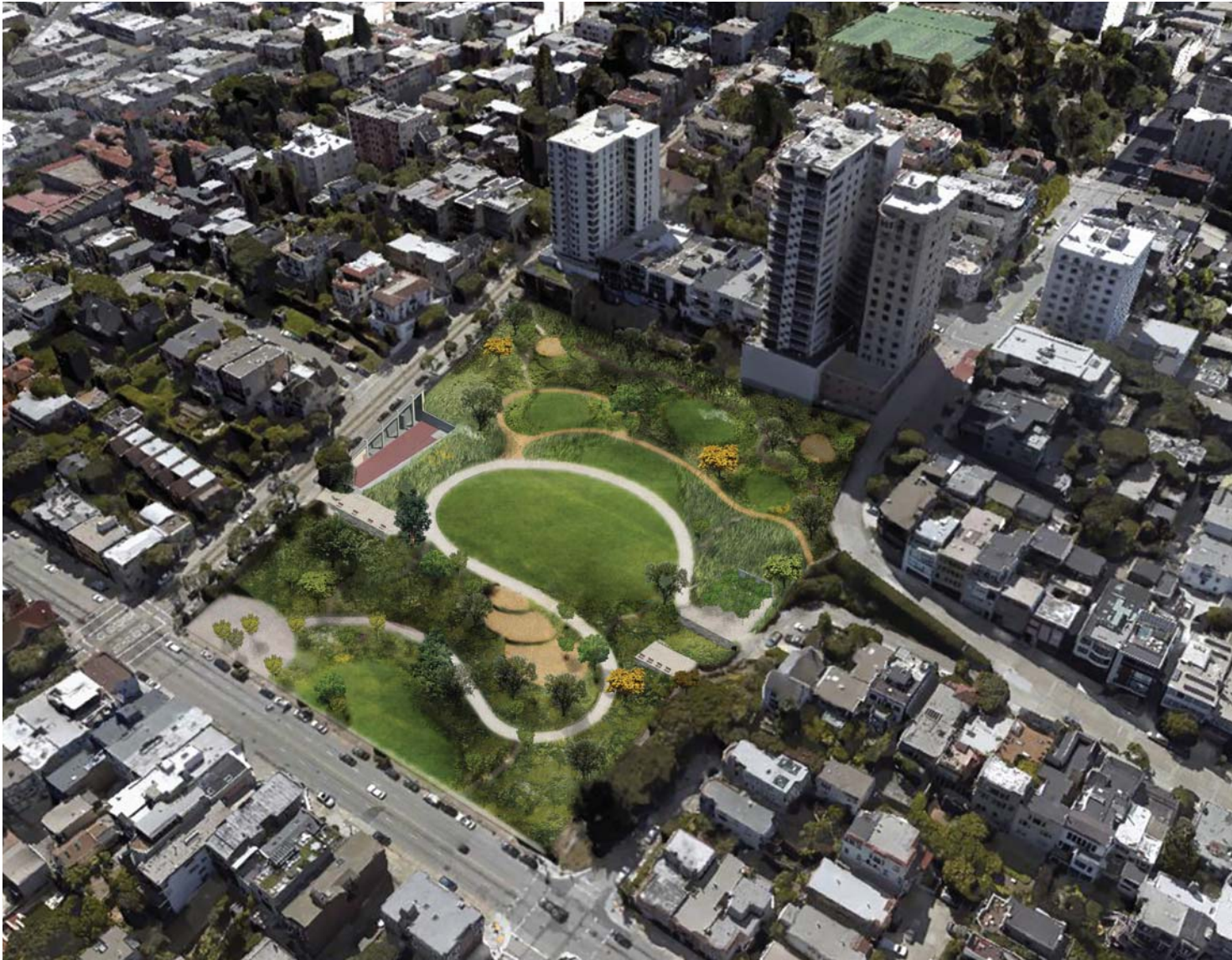
- Sustainability
- Lighting and Safety

Group #6

- Proposed Park Rules
- Proposed Park Name:
Francisco Park



Questions & Answers





Next Steps



- Civic Design Review Board: 2017
- Visual Arts Commission Review: 2017
- Rec & Park Commission Review: 2017
- Planning Department Review (CEQA): 2017
- Mayor's Office of Disability: 2017/2018
- Building Department Review: 2017/18
- San Francisco Public Utilities Commission: 2017/18
- Department of Public Works Review: 2017/18
- Municipal Transportation Agency Review: 2017/18
- Other City Agency Reviews (As Required): 2017/18
- Begin Construction: Spring 2018
- Grand Opening: 2019



Francisco Park

thank you!

謝謝你

We welcome your questions and comments!

www.franciscopark.org

info@francisopark.org